
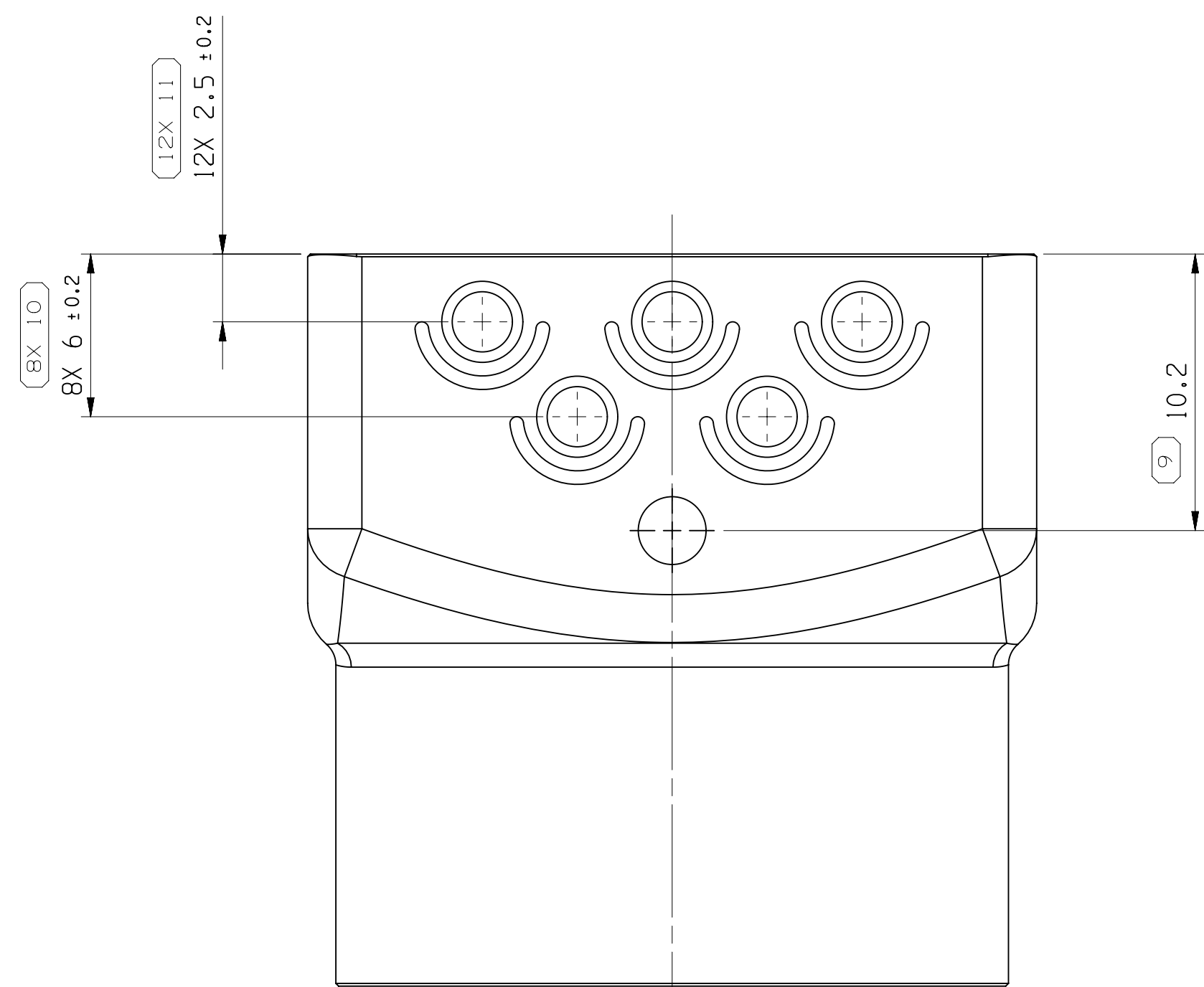
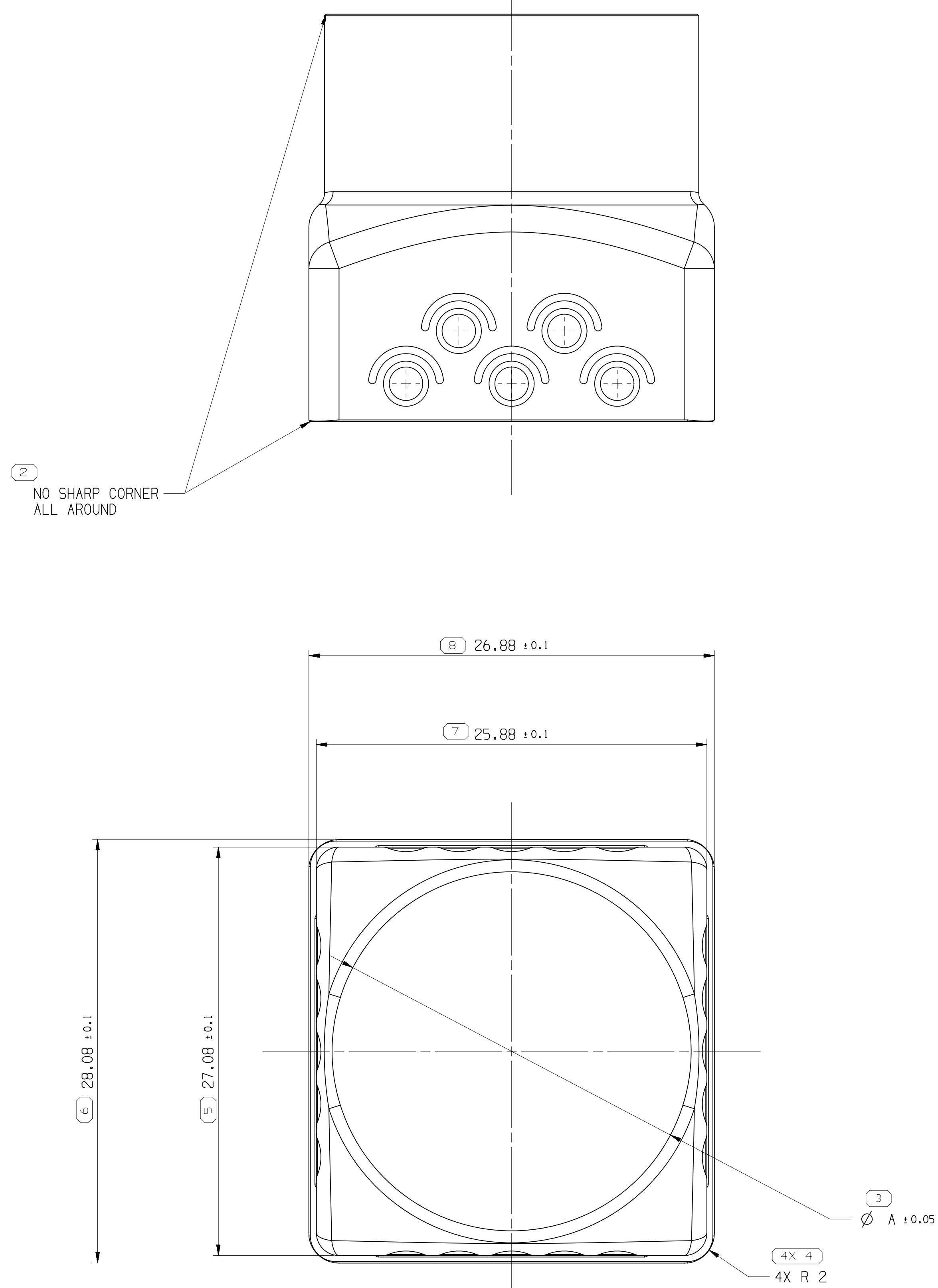
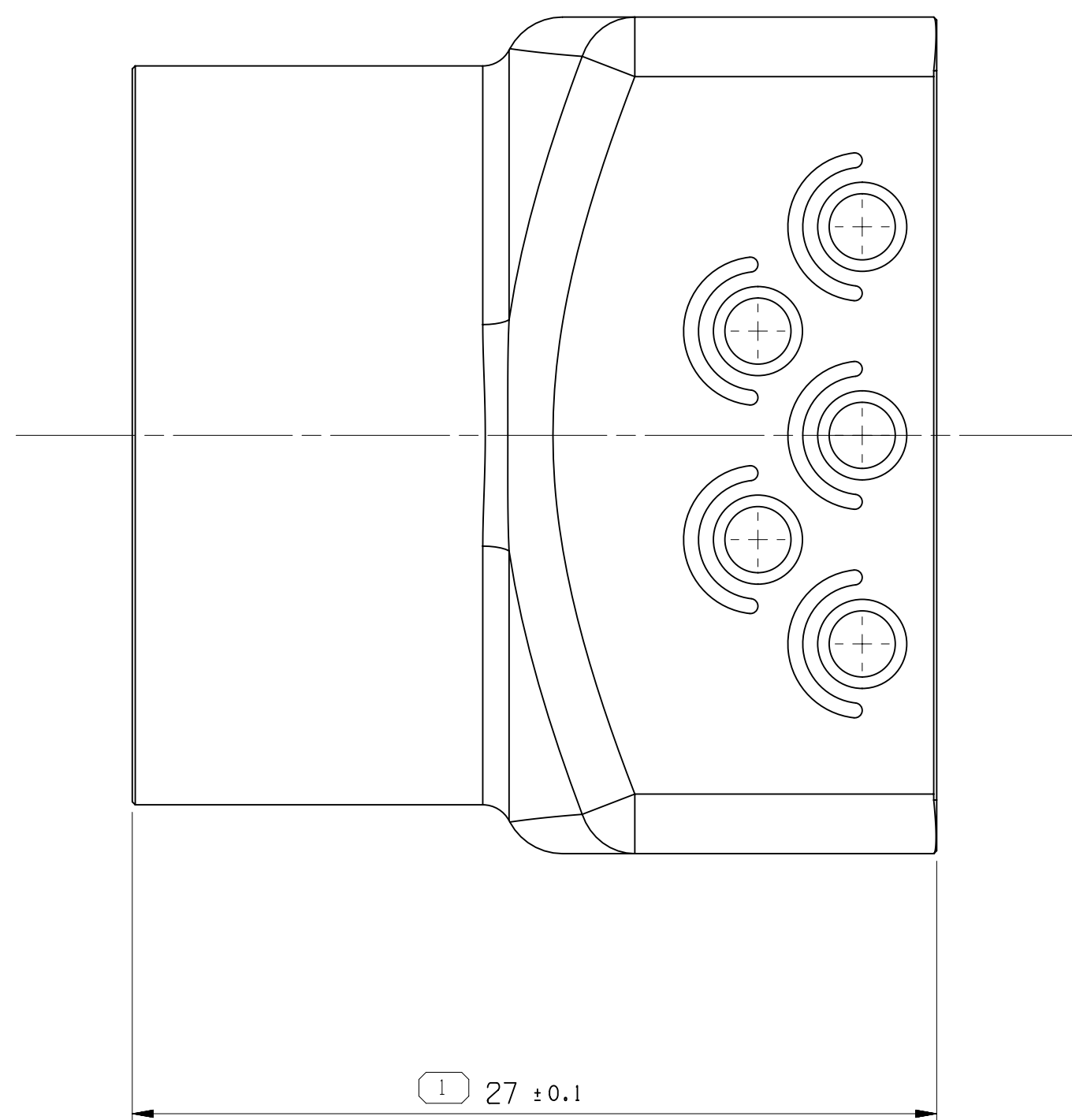
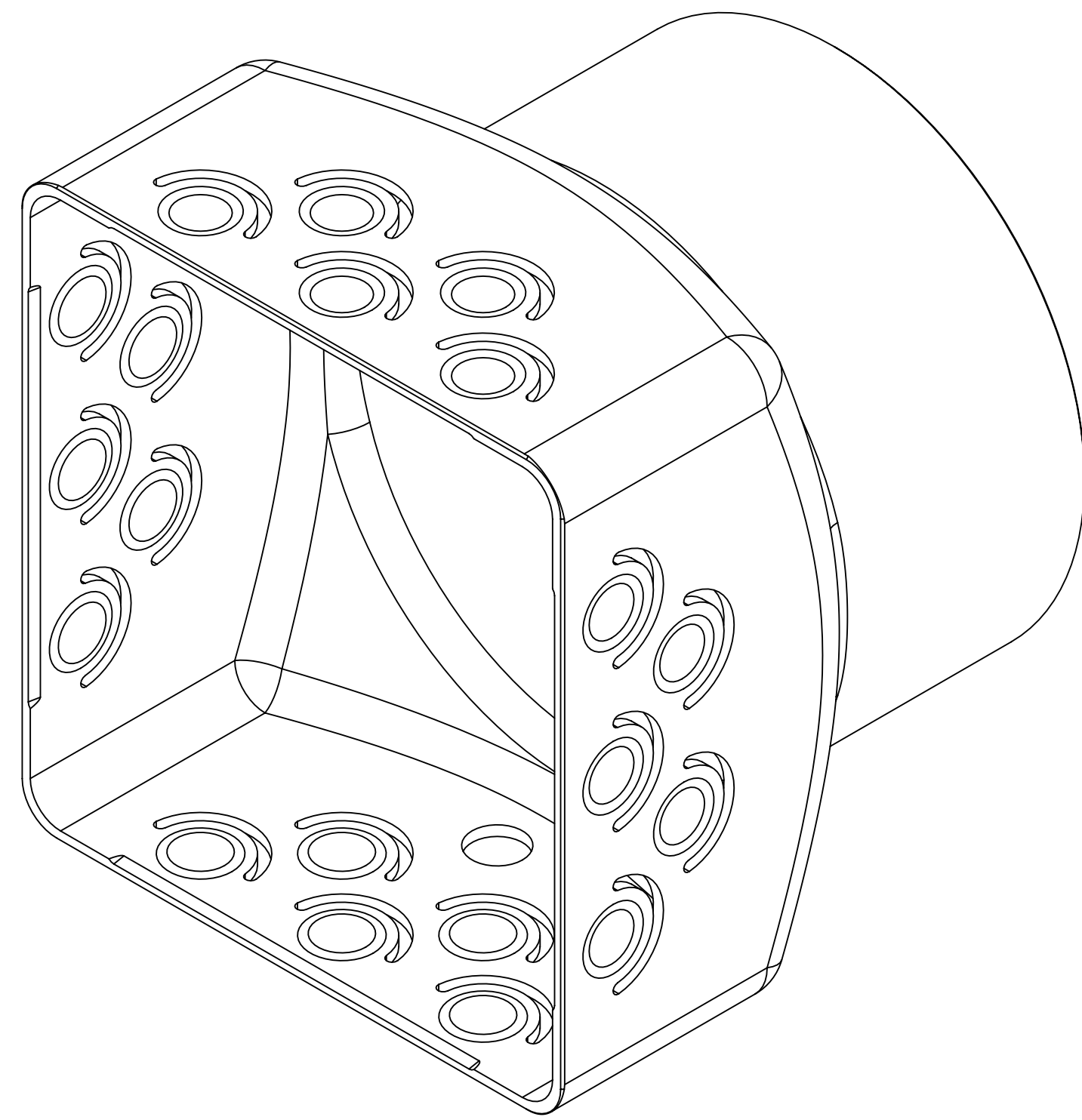


SYMBOL DEFINITION		
A DIMENSION WITHOUT AN INSPECTION REPORT SYMBOL  DOES NOT REQUIRE INSPECTION. IT MAY BE CONTROLLED ON THE INDIVIDUAL COMPONENT DRAWING.	TOTAL NO OF INSPECTIONS REQUIRED	32
	LAST NO. USED	11



1. UNLESS OTHERWISE SPECIFIED AND/OR INDICATED:

DIMENSIONS ARE TO FACE OF VIEW SHOWN AND AUTOMATICALLY ROUNDED BY COMPUTER FOR INSPECTION (SEE MATH MODEL FOR PRECISE DIMENSIONS). FOR ALL OTHER DIMENSIONS NOT SHOWN BUT REQUIRED FOR TOOL BUILD, SEE MATH MODEL FOR PRECISE TOOL PATH DATA. MAX BURR 0.05MM.

2. PART MUST BE FREE OF BURRS, SHARP EDGE, OIL, GREASE OR  
OR OTHER CONTAMINANTS.

3. ALL DIMENSIONS ARE AFTER PLATING.

4. OVERALL PLATE:

UNDERPLATE: THICKNESS OF NICKEL SULFAMATE SHALL BE 1.5µm - 4µm PER ASTM B-689, TYPE 1, CLASS X.



OVERPLATE: THICKNESS OF SILVER SHALL BE  $2\mu\text{m}$  -  $5\mu\text{m}$  PER ASTM B-700, TYPE 3, GRADE A, CLASS N, 165HV MIN.

ANTI TARNISH TREATMENT PER DELPHI M5815 SPECIFICATION REQUIREMENTS.  
ANY COATING BRAND OTHER THAN EVABRITE MUST BE APPROVED BY APTIV.

5. THIS PART ACCEPTS THE FOLLOWING COMPONENTS OR EQUIVALENT:  
TYPICAL DPN 35210554 & 35210555.

6. PART MUST BE WATERPROOF PACKING.

3		PROCESS SENSITIVE DIMENSION	
DIMENSIONS ENCLOSED IN ( ) INDICATE REFERENCE DIMENSIONS AND NO TOLERANCE LIMITS ARE ESTABLISHED			
DIMENSIONAL RANGE (MM)		CHART D	
FROM	0		
TO	12	>12	
TOLERANCE UNLESS OTHERWISE SPECIFIED			
	±0.1	±0.2	
ANGULAR TOLERANCE		±2°	

ALL DIMENSIONS ARE IN MILLIMETERS	
REFERENCE	
<p>THIRD ANGLE PROJECTION</p> 	<p>DO NOT SCALE</p> <p>USE MATH DATA</p> 

# •APTIV•

CONNECTION SYSTEMS

Beijing, China

COPYRIGHT 2019 APTIV. ALL RIGHTS RESERVED.

THIS DRAWING IS THE PROPERTY OF APTIV AND CONTAINS APTIV CONFIDENTIAL INFORMATION. THE REPRODUCTION, DISTRIBUTION AND UTILIZATION OF THIS DOCUMENT OR ITS RELATED CAD DATA FILES, AS WELL AS COMMUNICATION OF ANY CONTENT TO OTHERS, WITHOUT EXPRESS AUTHORIZATION, IS PROHIBITED.

		DATE
DP		
APV01	BERLIN ANAND ,S	12MR19
APV02	LINK GAO	12MR19
APV03	TIMON YU	12MR19
APV04		
APV05		
SUBSTANCES OF CONCERN AND RECYCLED CONTENT PER APTIV (1094900)		
MATERIALS OF CONCERN		
COPPER ALLOY		
DRAWING NAME:		
TAXI LOCK STRAIN RLF FERRULE OUTER		
DRAWING NUMBER		
35228845		
SIZE	SCALE	FRAME NO
A0	1:1	OF 1
		OF 1
		R
		01
		REV
		1

35210593	01	35210587	23.8	M6371	95	20.9 <sub>-0.6</sub>	0.800
35210592	01	35210586	21.1	M6371	70	18.2 <sub>-0.6</sub>	0.785
35210591	01	35210585	18.7	M6371	50	15.8 <sub>-0.6</sub>	0.773
PART NO	REV	MATING INNER FERRULE	DIM ØA	CABLE	CABLE SIZE (MM²)	CABLE OD	VOLUME (CM³)