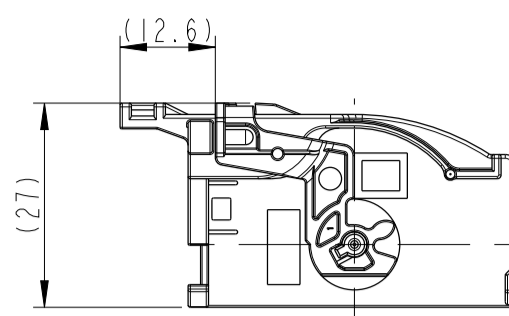
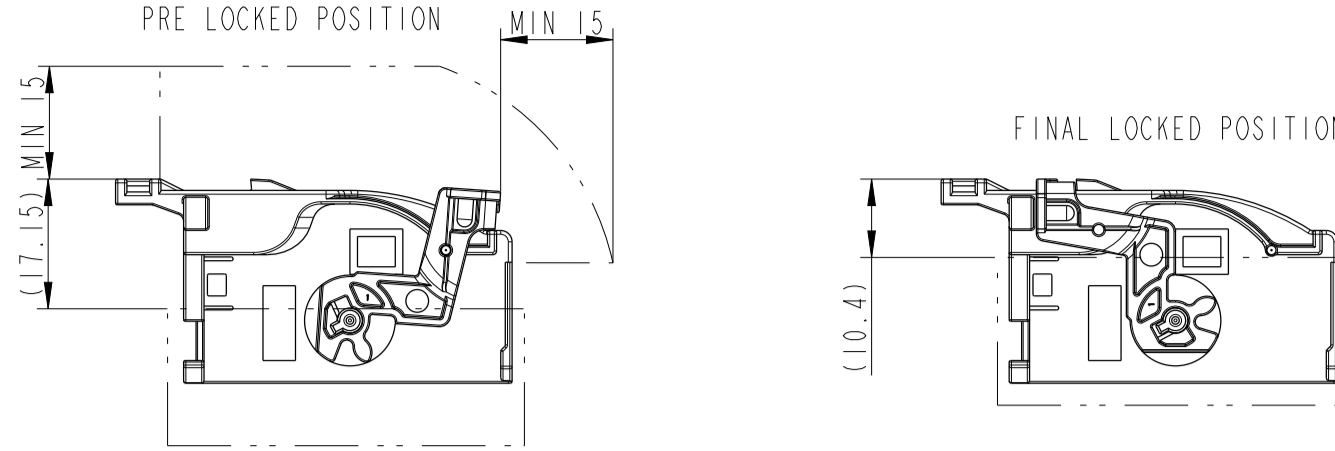


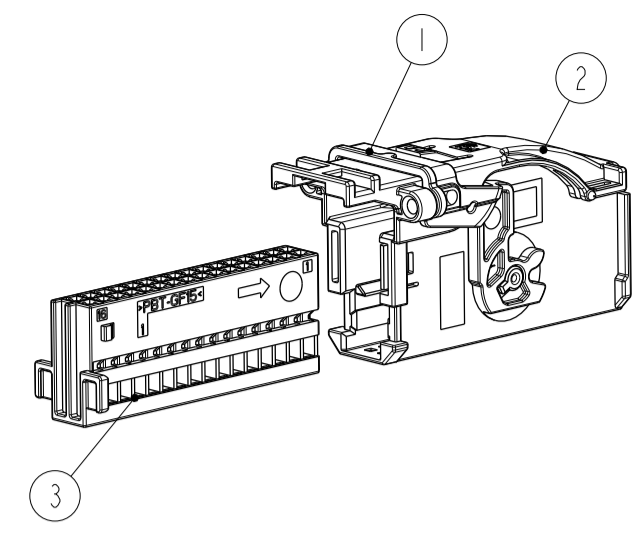
LEVER AT FINAL POSITION
SCALE 1:1



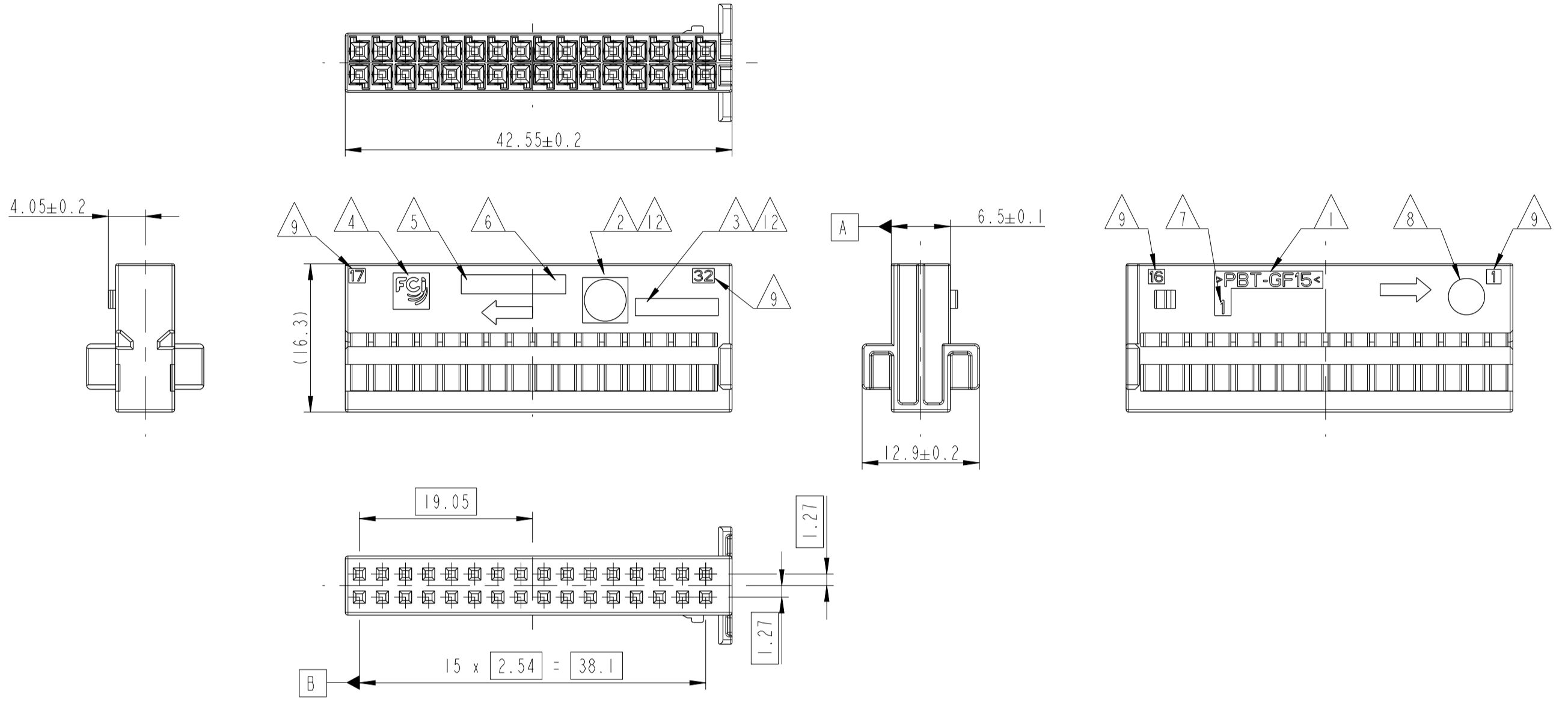
MOUNTING CONDITIONS
SCALE 1:1



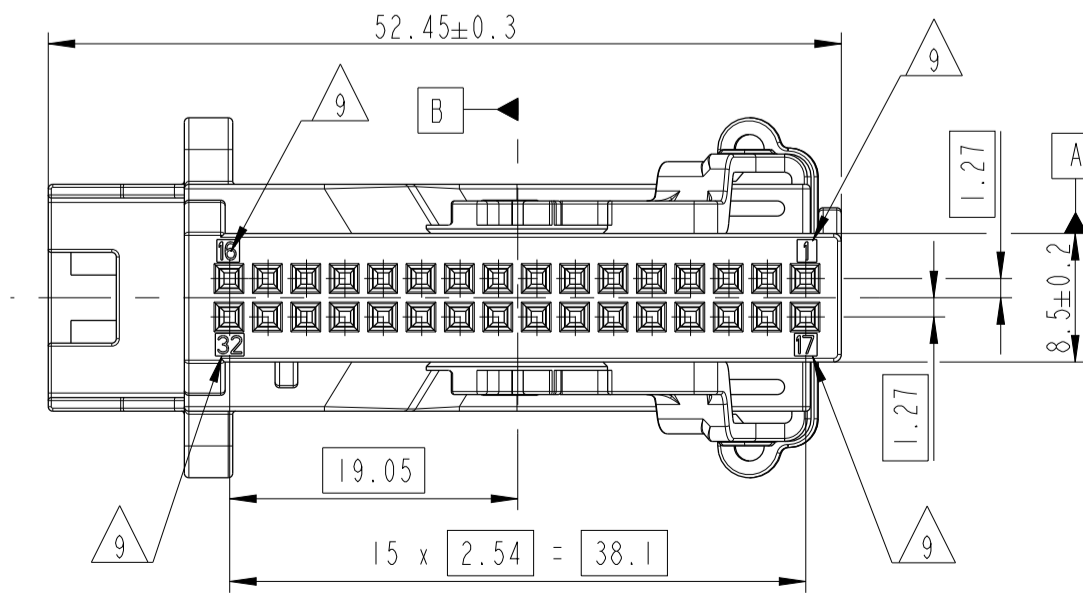
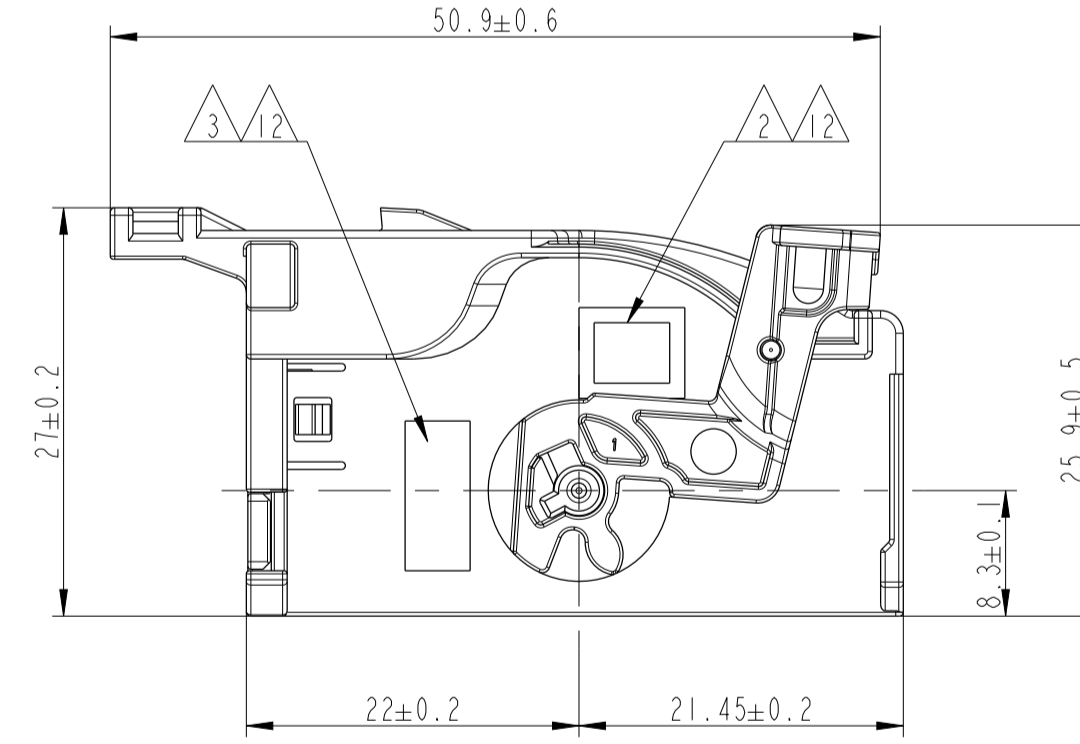
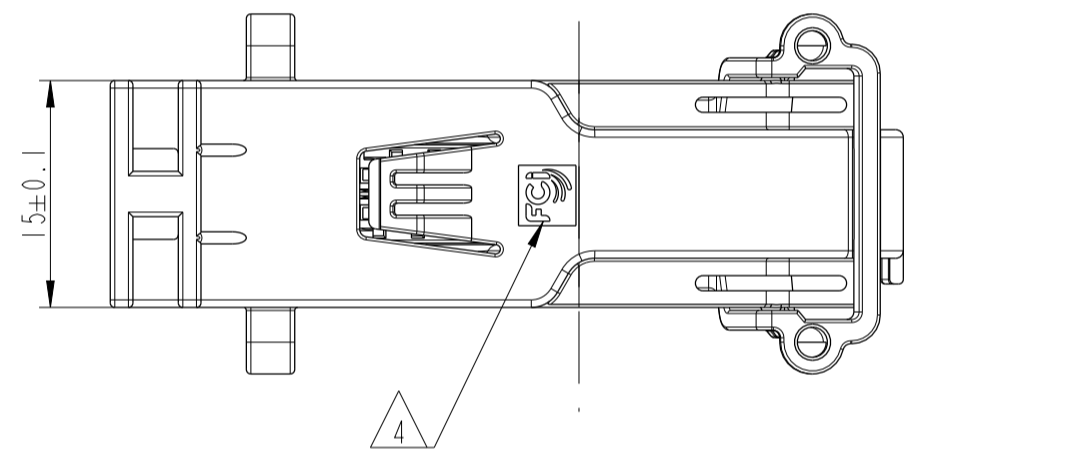
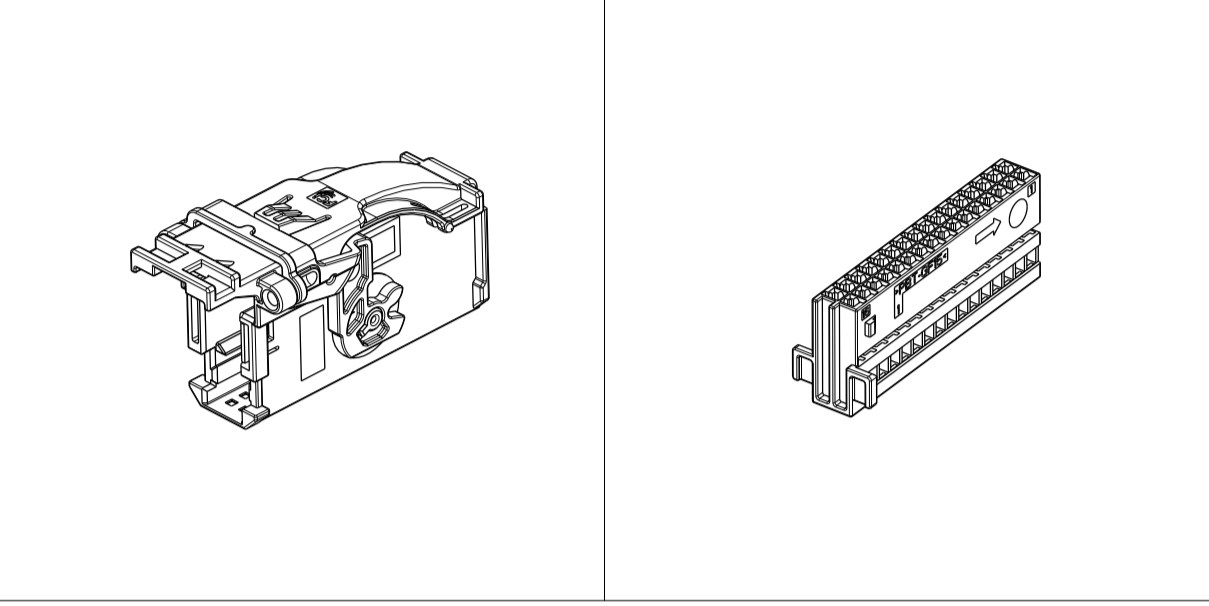
EXPLODED VIEW
SCALE 1:1



32W MODULE



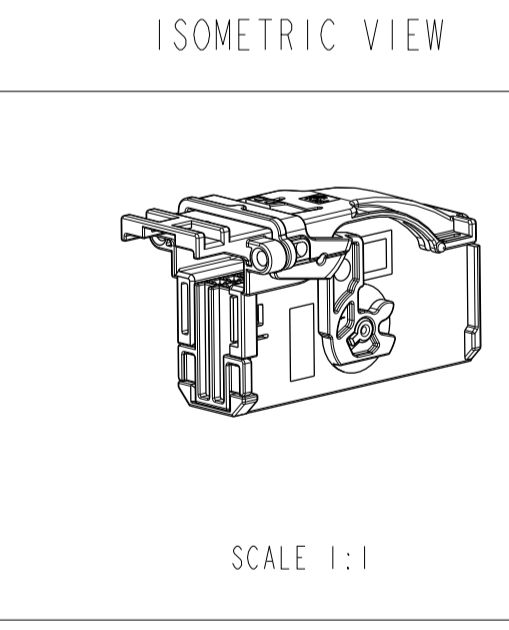
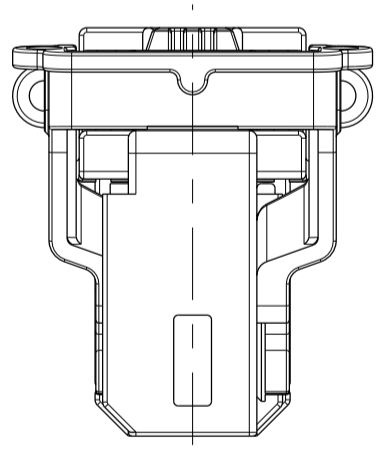
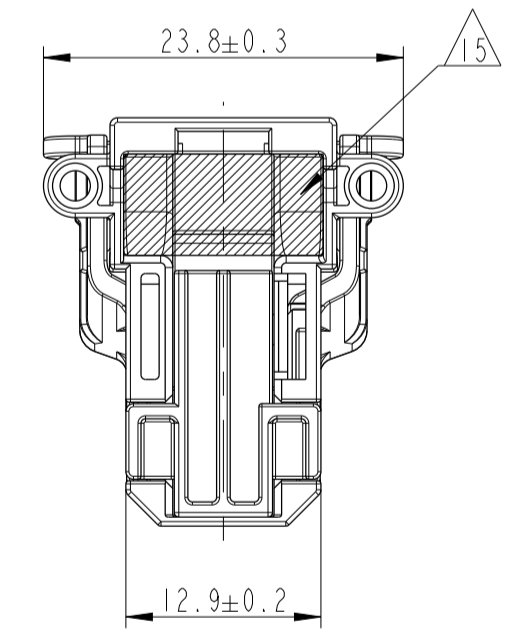
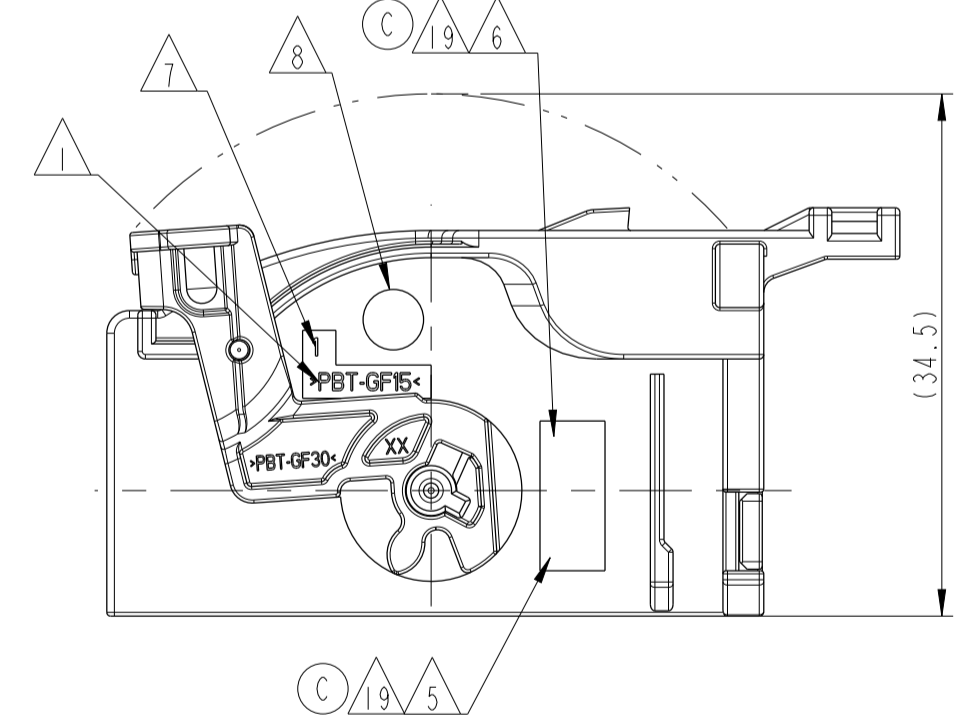
DELIVERY CONDITION
SCALE 1:1



NOTE	DESCRIPTION
1	MATERIAL MARKING
2	CUSTOMER LOGO
3	CUSTOMER PART NUMBER
4	MVL COMPANY LOGO TYPE
5	MVL ASSEMBLY PART NUMBER
6	MVL REVISION INDEX OF ASSEMBLY
7	MOLD CAVITY IDENTIFICATION
8	DATE CLOCK
9	CAVITY-IDENTIFICATION
10	MVL APPLICATION SPEC. NO. : SEE TITLE BLOCK
11	ACCORDING TO TYCO INTERFACE DRAWING : 966658
12	REMOVABLE INSERTS
13	CODING A-F SHOWN
14	DELIVERY CONDITION: LEVER IN FINAL LOCKED POSITION
15	MAXIMUM OF 8 TERMINALS CAN BE WITH CABLE CROSS SECTION OF 0.5mm ² . FOR FULL LOAD HIGHER WIRE SECTIONS NOT ALLOWED
16	ACCORDING TO DUOTWIN TERMINAL DRAWING 6 008 11 11/31
17	CONTACT CAVITY ACCORDING TO: 9 008 06 00 C SUITABLE FOR TYCO MOS AND FCI DCK 0.64 TERMINALS
18	PRODUCT SPECIFICATION VW: 9 901 19 90 PRODUCT SPECIFICATION GMW: 9 901 23 20
19	ASSEMBLY PART NO. AND ITS REVISION ENGRAVING TO BE MENTION DEPENDING ON CUSTOMER REQUIREMENT

CODINGS
SCALE 1:1

USABLE TERMINALS FOR THIS CONNECTOR				
DESCRIPTION	FCI - PART NO.	WIRE SIZE (mm ² /Ø)	SURFACE	MATERIAL (CONTACT/HOOD)
DUO-TWIN 0.64 MM FEMALE TERMINAL	6 008 01 11	0.22 - 0.50	(1 - 3) µm SN	CuNiSi R580/ X10CrNi 18-8
	6 008 01 31	0.50 - 0.75		



CODE	WEIGHT (g)	MVL ASSEMBLY PART NO.	REV. INDEX OF ASSEMBLY	DELPHI ASSEMBLY PART NO.	REV. INDEX OF ASSEMBLY	FCI PART NAME	MVL COMPONENT NO.	COMPONENT REV. INDEX	DELPHI COMPONENT NO.	COMPONENT REV. INDEX	MATERIAL	COLOUR	ITEM
Z	8.75	-	-	-	-	32W MODULE	-	-	-	-	>PBT-GF15<	WHITE	3
A-B-C-D-E-F	8.96	-	-	-	-	32W MODULE	-	-	-	-	>PBT-GF15<	VIOLET	1
A-C-E	8.85	-	-	-	-	32W MODULE	-	-	-	-	>PBT-GF15<	WHITE	3
C-D	8.82	-	33514895	01	-	32W MODULE	F957700	A	33514895	01	>PBT-GF15<	WHITE	3
A-F	8.82	-	33403554	01	-	32W MODULE	S757700	B	33514896	01	>PBT-GF15<	GREEN	1
C-D	8.82	F957700	A	33514895	01	32W MODULE	F957700	A	33514895	01	>PBT-GF15<	WHITE	3
A-F	8.82	F561110	A	33514899	01	32W MODULE	S461110	A	33514897	01	>PBT-GF15<	BLUE	1
CODING						LEVER	S857700	B	33514894	01	>PBT-GF30<	BLACK	2
						LEVER	S857700	B	33514894	01	>PBT-GF30<	PURPLE	2

ECN-NO.	ZONE	CHANGE DESCRIPTION
ECN-14-01141	EF 11-12	Note 19 added
	HW 1-4	Notes modified
	AC 9-16	Purple coding added for lever, Table modified and Delphi part No added

PROJECT SPEC.	PACKAGING SPEC.	APPLICATION SPEC.	COPYRIGHT
SEE NOTES	99030770	99022030	DELPHI CORPORATION AND/OR ITS AFFILIATES. ALL RIGHTS RESERVED. REVISED

TOLERANCES	MATERIAL	SURFACE FINISH
±0.2, ±0.2	SEE TABLE	SEE TABLE

DATE	NAME	TITLE
20140910	S. KUMARAJI	32W FEMALE MINI-TWIN CONNECTOR
20140910	P. RAMAKRISHNAN	32W FEMALE MINI-TWIN CONNECTOR
20140910	Subashini ANUP	32W FEMALE MINI-TWIN CONNECTOR
20140910	K. NAGASHYAMA	32W FEMALE MINI-TWIN CONNECTOR

DELPHI	DELPHI
DELPHI PACKARD ELECTRICAL/ELECTRONIC ARCHITECTURE	DELPHI
CHENNAI - INDIA	CHENNAI - INDIA
ECO Loc: C446	ECO Loc: C446
3RD ANGLE	3RD ANGLE
DIMENSION IN MILLIMETERS	DIMENSION IN MILLIMETERS
PART NUMBER	PART NUMBER
REV.	REV.
APPROVAL LEVEL	APPROVAL LEVEL
SHEET	SHEET
1	1
1	1
SCALE 2:1	SCALE 2:1