

**APN:** 33512190  
**Material:** CUSN  
**Surface:** SN  
**Material Thickness:** 0,28 mm  
**Cross Section [mm<sup>2</sup>]:** 1.50 | 2.00

MVL F982400

**Strip Length:** 4.50 mm  
**Cable Type:** T3ZHID

**Uncontrolled  
Copy**  
 For Information only!

**Isolation Range  $\Phi$ [mm]:** 2.10-2.50  
**Seal :**

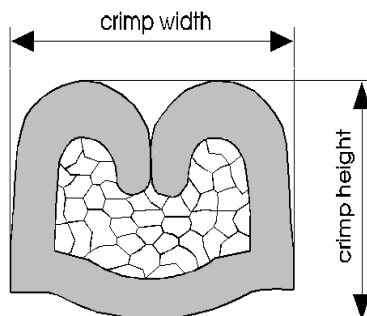
Cable type	Arrangement	Struct. nxd [mm]	Insul. diam [mm]	Tear-out force [N]	<b>CCH [mm]</b>	CCH tol. [ $\pm$ mm]	<b>CCW [mm]</b>	CCW tol. [ $\pm$ mm]	<b>ICH [mm]</b>	ICH tol. [ $\pm$ mm]	<b>ICW [mm]</b>	ICW tol. [ $\pm$ mm]
T3ZHID 1.50		19x0.31	2.20	200	1.54	+ 0.04 - 0.04	2.36	+ 0.04 - 0.04	2.70	+ 0.08 - 0.08	2.73	+ 0.08 - 0.08
T3ZHID 2.00		37x0.25	2.40	230	1.68	+ 0.04 - 0.04	2.37	+ 0.04 - 0.04	3.10	+ 0.08 - 0.08	2.76	+ 0.08 - 0.08

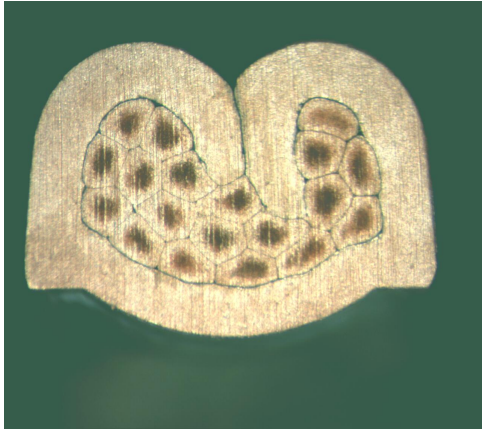
**Core:**  
 C-2.30-3.5-15  
 APN 10713062

**Isolation:**  
 IS-2.50-3.0-12  
 APN 10713792

**Anvil:**

Two piece anvil:  
 AC-2.30-3.75-A  
 APN 10791636  
 AI-2.50-3.8-0.4  
 APN 10806905

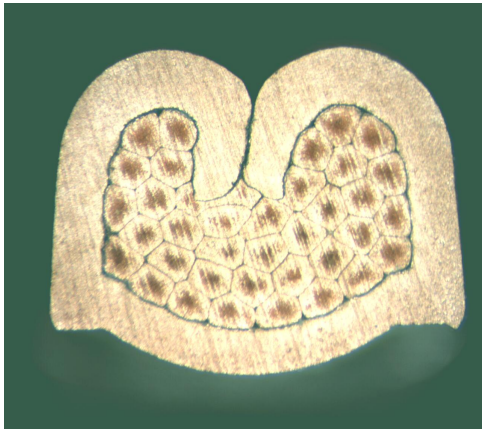




Cable:  
T3ZHID 1.50mm<sup>2</sup> = 19x0.31 mm

Crimp height:  
1.54 mm

Crimp width:  
2.36 mm



Cable:  
T3ZHID 2.00mm<sup>2</sup> = 37x0.25 mm

Crimp height:  
1.68 mm

Crimp width:  
2.37 mm