

# SHIELDPACK™ HV RCS800 SB



ShieldPack™ HV RCS800 SB  
2W 180° with HVIL

## BENEFITS

- Easy to assemble with integrated ErgoMate™ Axial Mating Assist System on harness connector
- Compact package with unique integrated electric interlock
- Header is sealed in both mated and unmated positions

## FEATURES

- Bundle shielding with external braid
- Panel mount to device with face seal to module
- Two-stage disconnect for safe unmating



## AVAILABLE CONFIGURATIONS

Connector Type	Wire-to-device
Cable Exit Orientation	180°
Cable Range (mm²)	35 - 50 (power) 0.5 - 0.75 (HVIL)
Terminal Type	8 mm round contact system
# of Power Terminals	2
Shielding	Bundle
HVIL	Shunt on female
Assembly Assurance	CPA
Number of Indexes	2



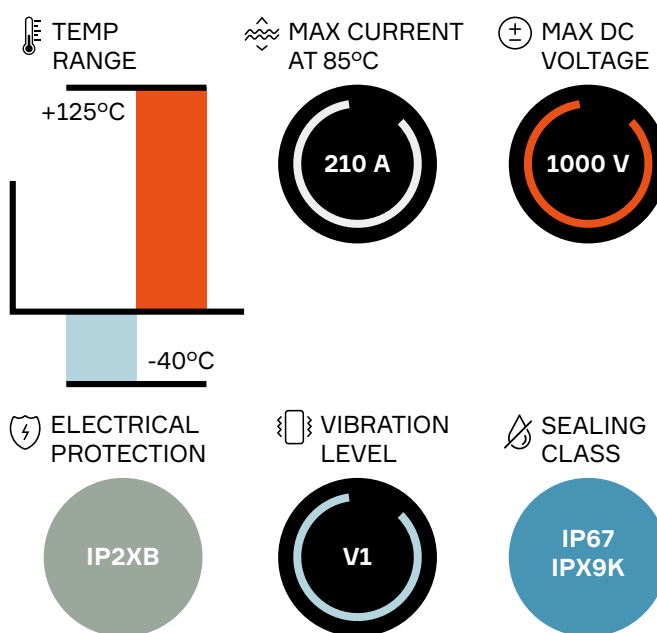
## APPLICATIONS

AC / DC inverter, DC / DC converter, HV battery,  
Power electric box, HV PDU

See back page for representative part numbers and packaging dimensions.



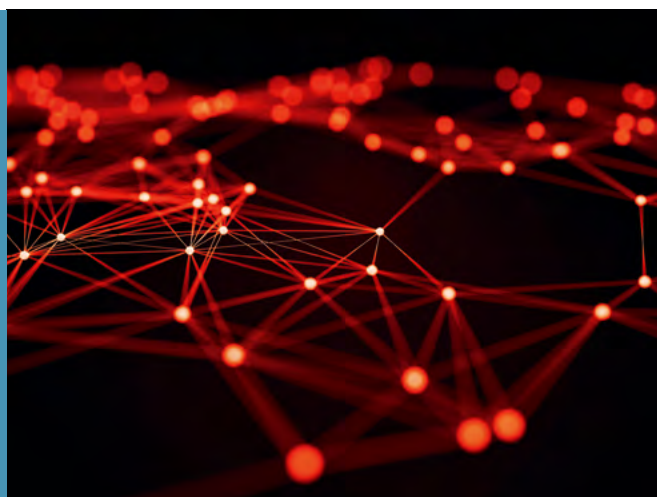
## TECHNICAL CHARACTERISTICS



## About Aptiv

Aptiv is a global technology company that develops safer, greener and more connected solutions enabling the future of mobility.

Visit [aptiv.com](https://aptiv.com)



• **APTIV** •

Index	Header connector	Mating connector	BOM
1	33511764	13974469	1
2	33511762	33511761	

## ASSOCIATED PARTS

Part number	Description	BOM
-------------	-------------	-----

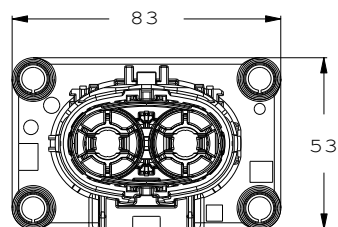
### Header

33512193	RCS 800/890 male pin terminal silver version standard length	2
33511746	RCS 800/890 male pin terminal silver version V1 length	
33511747	RCS 800/890 male pin terminal silver version V2 length	
10779703	DCS2 1.5 male terminal gold-plated 0.5 - 1.0 mm <sup>2</sup>	2
15441379	DCS/DSQ 1.5 red single wire seal 0.22 - 0.5 mm <sup>2</sup>	2
15441380	DCS/DSQ 1.5 grey single wire seal 0.75 - 1.0 mm <sup>2</sup>	

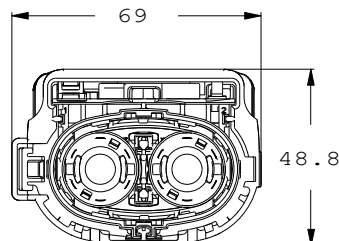
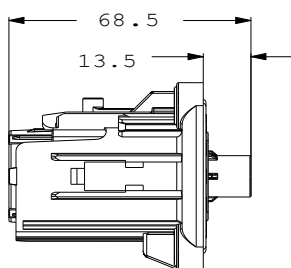
### Mating Connector

13893887	RCS 800 female terminal silver version 35 - 50 mm <sup>2</sup>	2
13893889	RCS 800 female retainer (plug)	2
13893888	RCS 800 female 35 - 40 mm <sup>2</sup> (plug)	2
13923559	RCS 800 female 50 mm <sup>2</sup> (plug)	

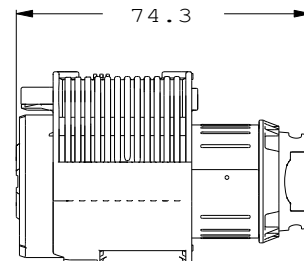
## DIMENSION MEASUREMENT SAMPLE



33511764



13974469



Part numbers, specifications, dimensions and performance data in this document are for general references only and are subject to change without notice. To verify product information, please contact an Aptiv representative.