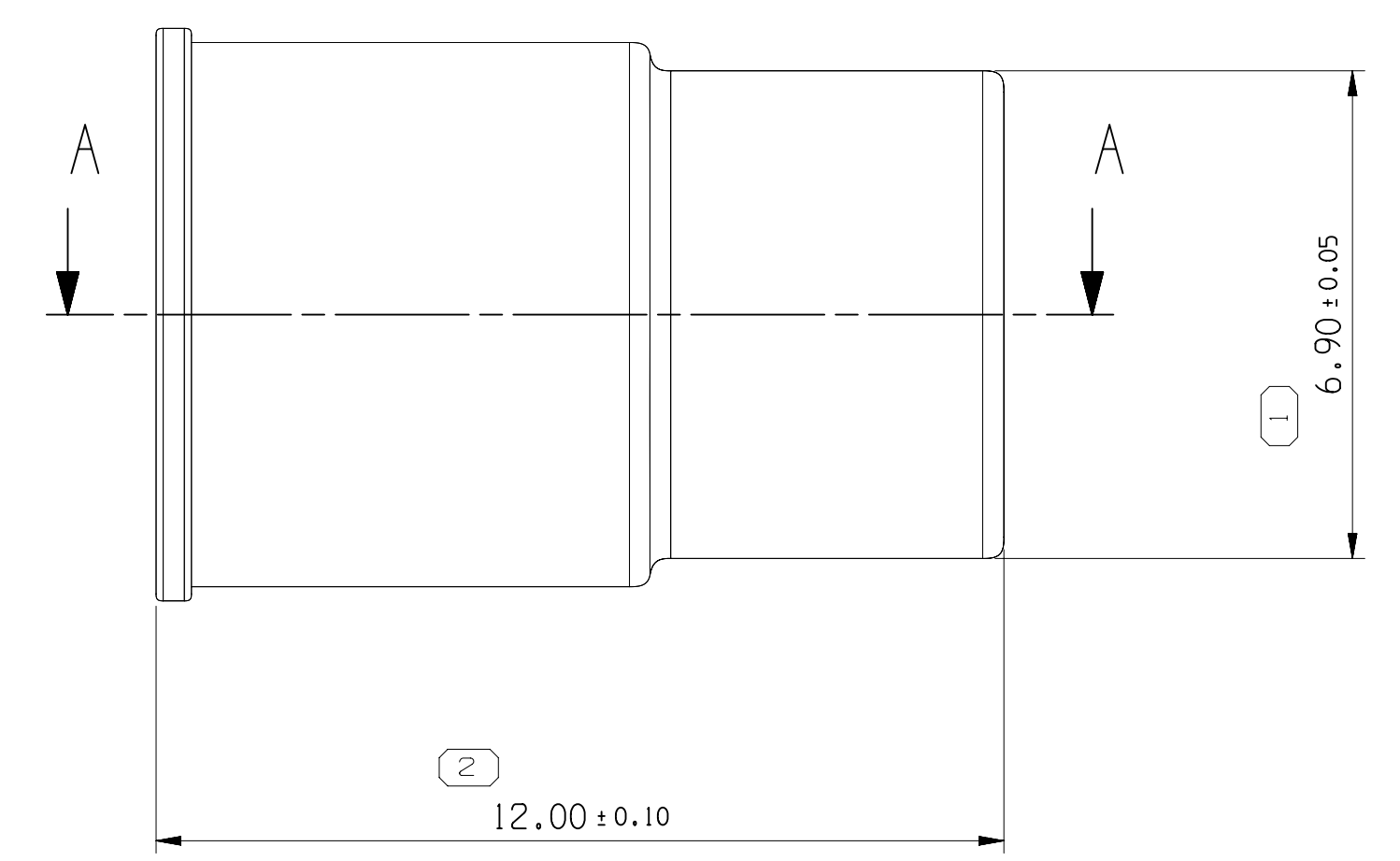
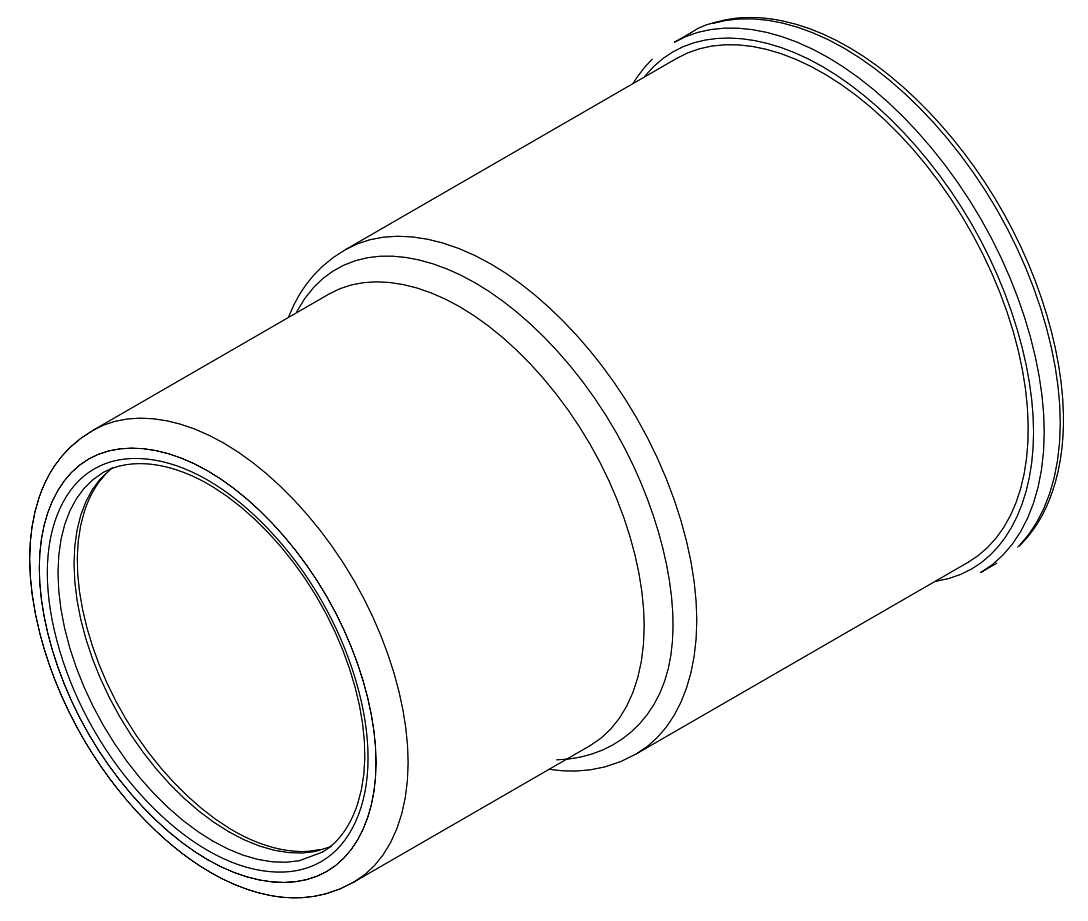
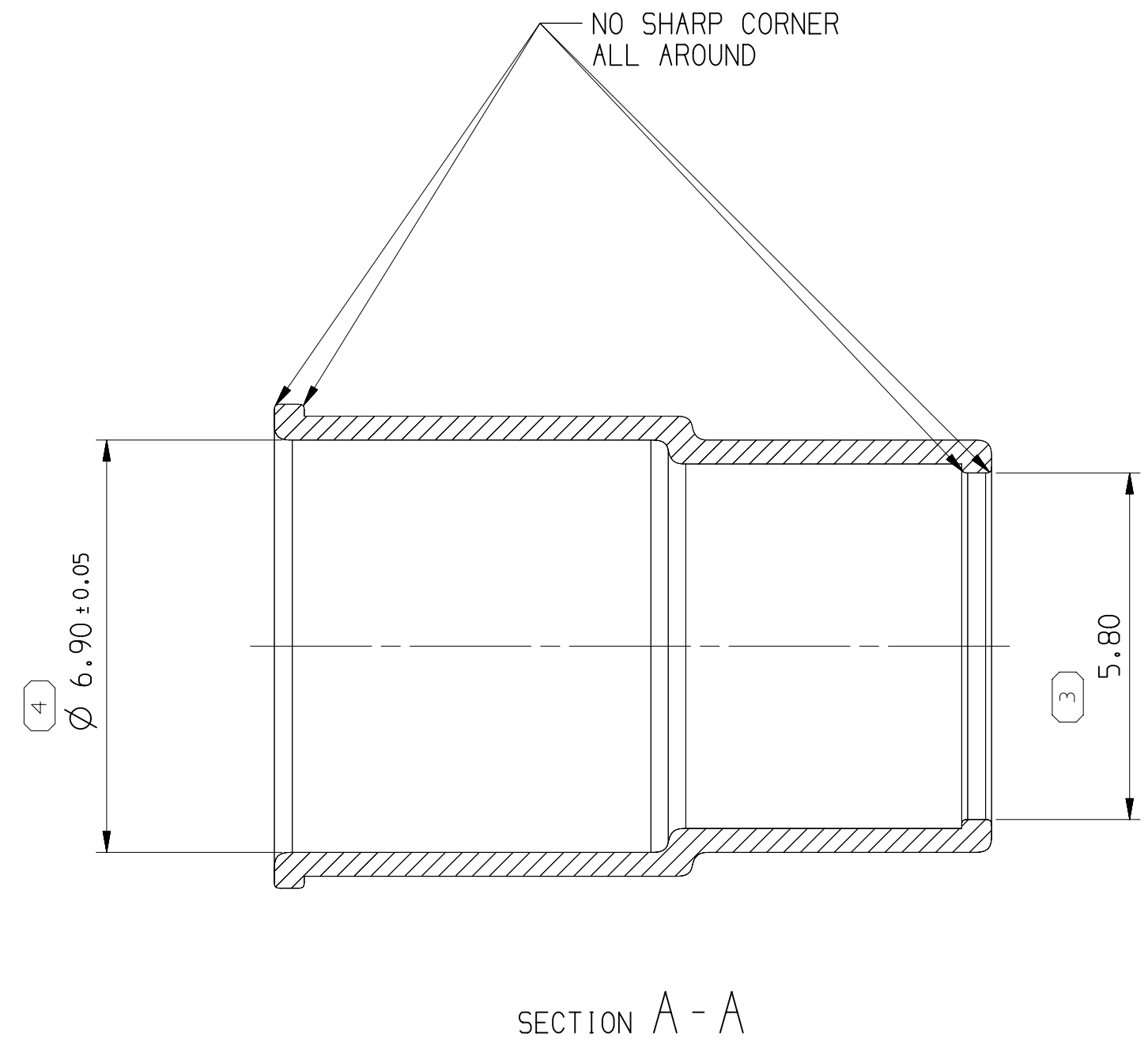


SYMBOL DEFINITION		MISSING SYMBOLS	
A DIMENSION WITHOUT AN INSPECTION REPORT SYMBOL DOES NOT REQUIRE INSPECTION. IT MAY BE CONTROLLED ON THE INDIVIDUAL COMPONENT DRAWING.	TOTAL NO OF INSPECTIONS REQUIRED	NO MISSING SYMBOL NUMBER	4
	LAST NO. USED		4

DWG STATUS		ZONE		REVISION HISTORY		AUTH	DR	APVD	APVD
DATE	STG	REV	N/P	CHG					
15DE21	R	01	-	-	CREATED PART DRAWING	448427	HC	SBH	YLX



- NOTES
- UNLESS OTHERWISE SPECIFIED AND/OR INDICATED:  
DIMENSIONS ARE TO FACE OF VIEW SHOWN AND AUTOMATICALLY ROUNDED BY COMPUTER FOR INSPECTION (SEE MATH MODEL FOR PRECISE DIMENSIONS). FOR ALL OTHER DIMENSIONS NOT SHOWN BUT REQUIRED FOR TOOL BUILD, SEE MATH MODEL FOR PRECISE TOOL PATH DATA.
  - PART MUST BE FREE OF MICRO CRACK, BURRS, SHARP EDGE, OIL, GREASE OR OTHER CONTAMINANTS.
  - ALL DIMENSIONS ARE AFTER PLATING.
  - COMPONENTS MUST BE PACKAGED IN A SEALED BAG.
  - THIS PART TYPICALLY USED IN LAYOUT ASSEMBLY DRAWING - 35607522.
  - ONLY RECOMMENDED CABLE ACC. TO LV216-2, CABLE SIZE: 4.0/5.0/6.0 MM<sup>2</sup> WILL BE VALIDATED.  
ALL OTHER CABLE SUPPLIERS / CABLE SIZES MUST BE VALIDATED.
  - PLATING:  
UNDERPLATE: THICKNESS OF NICKEL SULFAMATE SHALL BE 1.5μm - 4μm PER ASTM B-689, TYPE 1, CLASS X.  
OVERPLATE: THICKNESS OF TIN SHALL BE 3μm - 6μm PER ASTM B-545.
- ANTI TARNISH TREATMENT PER DELPHI M5815 SPECIFICATION REQUIREMENTS. ANY COATING BRAND OTHER THAN EVABRITE MUST BE APPROVED BY APTIV.

A LINE DRAWN THROUGH A PART NUMBER INDICATES THAT PHYSICAL PARTS ARE NOT AVAILABLE FOR ORDERING.	
PART NUMBERS THAT DO NOT HAVE A LINE PRESENT INDICATE THAT PHYSICAL PARTS ARE AVAILABLE FOR ORDERING.	
CONTACT APTIV SALES TO ASSURE AVAILABILITY OF PARTS.	
DWG TYPE	PART DRAWING
STYLE	
VOLUME (CONT)	DISTR CODE
SEE CHART	D
UNLESS OTHERWISE SPECIFIED	
THIS DOCUMENT IS IN ACCORDANCE WITH ASME Y14.5M-1994 AS MODIFIED BY THE 2018 GLOBAL DIMENSIONING AND TOLERANCING ADDENDUM-2009. SEPARATE PATTERNING OF FEATURES MAY BE AWARDED SEPARATELY REGARDLESS OF DATUM REFERENCES.	
ALL DIMENSIONS ARE IN MILLIMETERS	
REFERENCE	

**• APTIV •**  
CONNECTION SYSTEMS  
Anqing, China  
COPYRIGHT 2021 APTIV. ALL RIGHTS RESERVED.  
THIS DRAWING IS THE PROPERTY OF APTIV AND CONTAINS APTIV CONFIDENTIAL INFORMATION. THE REPRODUCTION, DISTRIBUTION AND UTILIZATION OF THIS DOCUMENT OR ITS RELATED CAD DATA, AS WELL AS COMMUNICATION OF ANY CONTENT TO OTHERS, WITHOUT EXPRESS AUTHORIZATION, IS PROHIBITED.

DR	DATE
APVD1: HE CAO	15DE21
APVD2: SUJIBIN HUANG	15DE21
APVD3: YUANLIANG XU	15DE21
APVD4:	
APVD5:	

MATERIAL: SEE CHART  
SUBSTANCES OF CONCERN AND RECYCLED CONTENT (10949001) (10949001)

DRAWING NAME: TAXI TERM NA FERRULE NI+SN  
DRAWING NUMBER: 35607555

SIZE: A0  
SCALE: 10:1  
FRAME NO: 1 OF 1  
SHEET NO: 1 OF 1  
STG REV N/P: R 01 -

② PROCESS SENSITIVE DIMENSION	
DIMENSIONS ENCLOSED IN ( ) INDICATE REFERENCE DIMENSIONS AND NO TOLERANCE LIMITS ARE ESTABLISHED	
DIRECTIONAL RANGE (MM)	CHART D
FROM 0 TO 12	
TOLERANCE UNLESS OTHERWISE SPECIFIED	
±0.1	±0.2
ANGULAR TOLERANCE ±2°	

35663486	01	OUTER FERRULE FOR 2.5 MM <sup>2</sup> CABLE	COPPER ALLOY	0.108
PART NO	REV	DESCRIPTION	MATERIAL	VOLUME (CM <sup>3</sup> )

User: E:\proj\35663486\35663486.dwg, Sheet: 11-Oct-22, Time: 14:00:54