

# Crimp - Validation

APN: 13872467  
 Material: CU-ALLOY  
 Surface: AU  
 Material Thickness: 0.20 mm  
 Cross Section [mm<sup>2</sup>]: 0.75 | 1.00

Strip Length: 4.00 mm  
 Cable Type: FLRY-B

**Uncontrolled  
Copy**  
For Information only!

Isolation Range  $\Phi$ [mm]: 1.70-2.10  
 Seal :

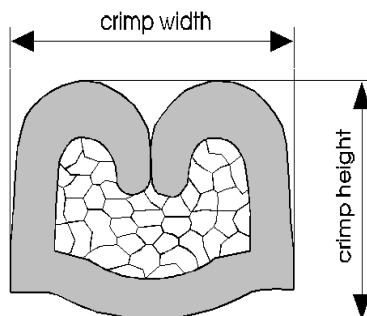
Cable type	Arrangement	Struct. nxd [mm]	Insul. diam [mm]	Tear-out force [N]	<b>CCH [mm]</b>	CCH tol. [ $\pm$ mm]	<b>CCW [mm]</b>	CCW tol. [ $\pm$ mm]	<b>ICH [mm]</b>	ICH tol. [ $\pm$ mm]	<b>ICW [mm]</b>	ICW tol. [ $\pm$ mm]
FLRY-B 0.75		24x0.21	1.80	120	1.05	+ 0.05 - 0.05	1.70	+ 0.10 - 0.10	2.10	+ 0.10 - 0.10	2.15	+ 0.10 - 0.10
FLRY-B 1.00		32x0.21	2.00	160	1.15	+ 0.05 - 0.05	1.70	+ 0.10 - 0.10	2.20	+ 0.10 - 0.10	2.15	+ 0.10 - 0.10

Core:  
 C-1.60-3.0-10  
 APN 10713736

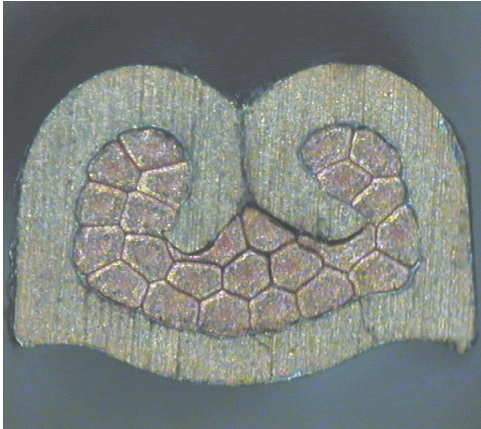
Isolation:  
 IS-2.00-2.5-12  
 APN 10713805

Anvil:

Two piece anvil:  
 AC-1.60-3.25  
 APN 10764051  
 AI-2.00-3.2-0.4  
 APN 10764006



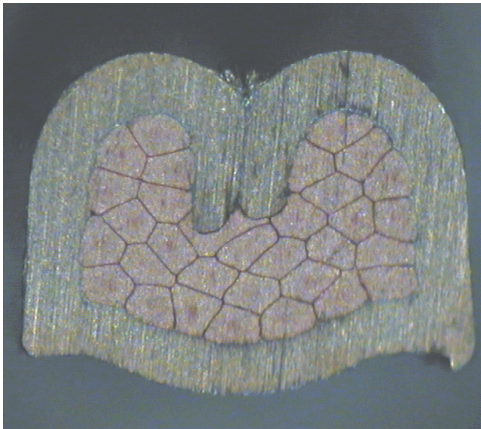
APN: 13872467



Cable:  
FLRY-B 0.75mm<sup>2</sup> = 24x0.21 mm

Crimp height:  
1.05 mm

Crimp width:  
1.70 mm



Cable:  
FLRY-B 1.00mm<sup>2</sup> = 32x0.21 mm

Crimp height:  
1.15 mm

Crimp width:  
1.70 mm