

# Crimp - Validation

APN: 33400852  
 Material: CUSN4  
 Surface: SN  
 Material Thickness: 0.32 mm  
 Cross Section [mm<sup>2</sup>]: 0.35 + 0.35 | 0.35 + 0.50 | 0.50 + 0.50

MVL F088410

Strip Length: 4.00 mm  
 Cable Type: FLRY-B +FLRY-B

**Uncontrolled  
Copy**  
For Information only!

Isolation Range  $\Phi$ [mm]:

Seal : |

Cable type	Arrangement	Struct. nxd [mm]	Insul. diam [mm]	Tear-out force [N]	CCH [mm]	CCH tol. [±mm]	CCW [mm]	CCW tol. [±mm]	ICH [mm]	ICH tol. [±mm]	ICW [mm]	ICW tol. [±mm]
FLRY-B 0.35 + FLRY-B 0.35	Top (cables on top of each other)	12x0.21 + 12x0.21	1.30 + 1.30	50	1.40	+ 0.05 - 0.05	1.90	+ 0.10 - 0.10	2.90	+ 0.10 - 0.10	2.65	+ 0.10 - 0.10
FLRY-B 0.35 + FLRY-B 0.50	Top (cables on top of each other)	12x0.21 + 16x0.21	1.30 + 1.50	50	1.50	+ 0.05 - 0.05	1.90	+ 0.10 - 0.10	2.95	+ 0.10 - 0.10	2.65	+ 0.10 - 0.10
FLRY-B 0.50 + FLRY-B 0.50	Top (cables on top of each other)	16x0.21 + 16x0.21	1.50 + 1.50	80	1.55	+ 0.05 - 0.05	1.95	+ 0.10 - 0.10	2.95	+ 0.10 - 0.10	2.65	+ 0.10 - 0.10

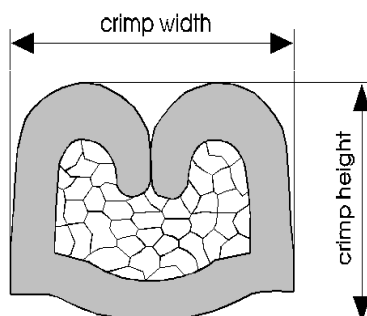
Remarks: REQUIRED BELLMOUTH LENGTH 0,25 (+0,15 /- 0,00)

Core:  
 C-1.85-3.0-15  
 APN 10713544

Isolation:  
 IO-2.50-2.5-10  
 APN 10713870

Anvil:  
 AS-1.85-2.50-6.0-2.3-0.4  
 APN 10713968

Two piece anvil:  
 AC-1.85-3.25  
 APN 10764127  
 AI-2.50-2.6-0.4  
 APN 10806902



Notice to cable arrangement  
 side: cables side by side  
 top: one cable on top of the other  
 n. d.: not defined



Cable:  
FLRY-B 0.35mm<sup>2</sup> + FLRY-B 0.35mm<sup>2</sup> = 12x0.21 mm + 12x0.21 mm

Crimp height:  
1.40 mm

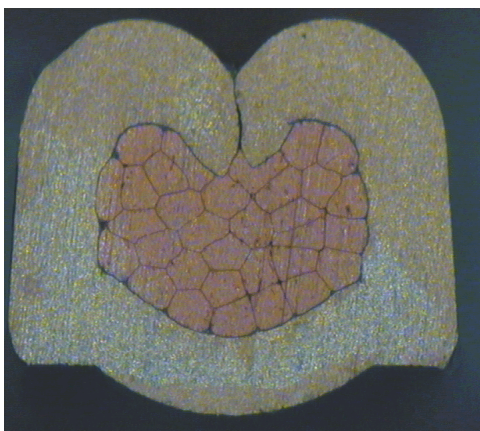
Crimp width:  
1.90 mm



Cable:  
FLRY-B 0.35mm<sup>2</sup> + FLRY-B 0.50mm<sup>2</sup> = 12x0.21 mm + 16x0.21 mm

Crimp height:  
1.50 mm

Crimp width:  
1.90 mm



Cable:  
FLRY-B 0.50mm<sup>2</sup> + FLRY-B 0.50mm<sup>2</sup> = 16x0.21 mm + 16x0.21 mm

Crimp height:  
1.55 mm

Crimp width:  
1.95 mm