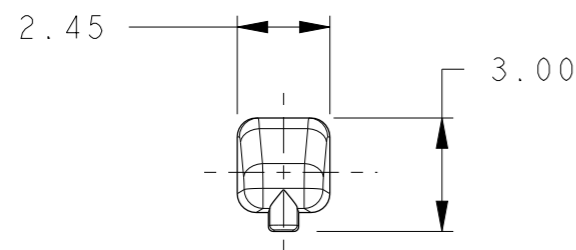
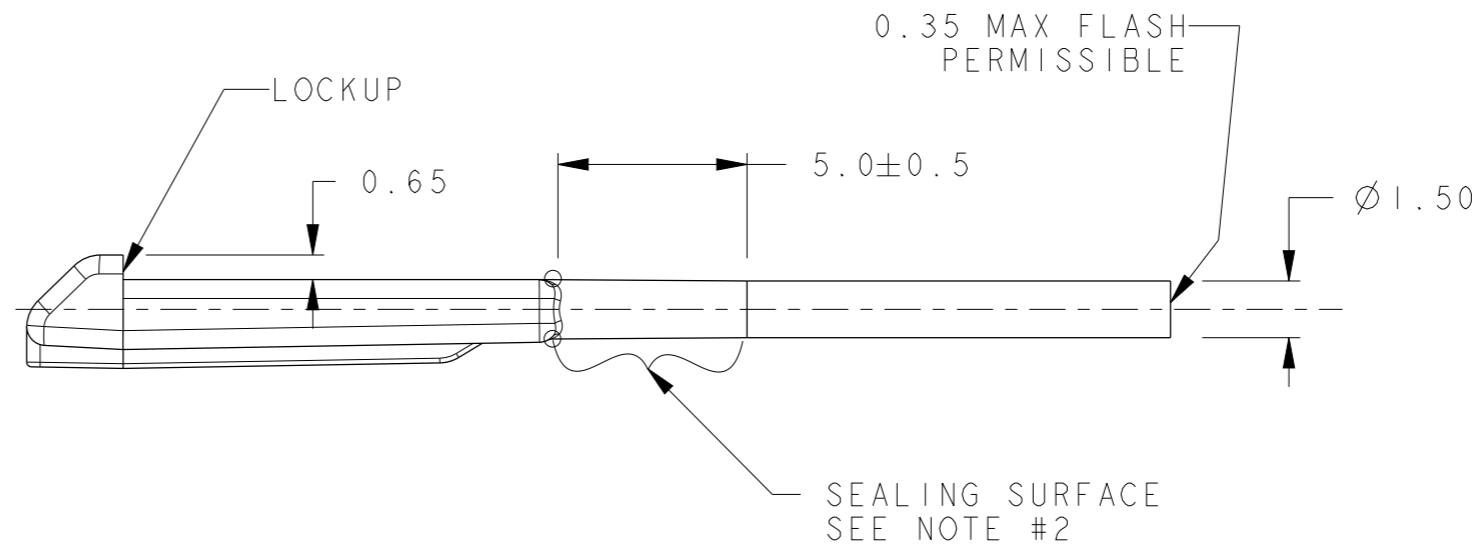



ISO VIEW
SCALE 1:1



VIEW DIMENSIONS
MEASURED AT LOCKUP ONLY



NOTES : UNLESS OTHERWISE SPECIFIED

- DIMENSIONS AND TOLERANCING PER ASME Y14.5M-1994.
- SEALING SURFACE MUST BE W/O PARTING LINE, MISMATCH, OR GATES, ALL AROUND.
-  QUALITY ASSURANCE REQUIREMENTS SPC DATA REQUIRED: (MOLD PROCESS PARAMETERS PERMISSIBLE)

54241629	D	13613164	01	M5600101
PART NO.	PCL	PART NO.	REV	MATERIAL SPECIFICATION
MVL		DELPHI		

13-01382	ALL	ECO 424955 - REVISED & REDRAW IN PDS, ADDED DELPHI P/N, MATERIAL SPECIFICATION AND REV LEVEL FOR MVL PART TITLE REVISED WAS UNIVERSAL SEAL PLUG		
ECN-NO.	ZONE	CHANGE DESCRIPTION		
PRODUCT SPEC.	PACKAGING SPEC.	APPLICATION SPEC.	COPYRIGHT DELPHI CORPORATION AND/OR ITS AFFILIATES. ALL RIGHTS RESERVED. REVISED THIS DRAWING IS THE PROPERTY OF DELPHI CORPORATION AND CONTAINS DELPHI CONFIDENTIAL INFORMATION. THE REPRODUCTION, DISTRIBUTION AND UTILIZATION OF THIS DOCUMENT OR ITS RELATED CAD MATH DATA, AS WELL AS COMMUNICATION OF ANY CONTENT TO OTHERS, WITHOUT EXPRESS AUTHORIZATION, IS PROHIBITED.	
APEX 150	-	-	MATERIAL : PA66 GF35 BASF A3EG7 100% REGRIND OK	
TOLERANCES	X.XX ± 0.10	COLOUR :	NATURAL	SURFACE FINISH
COUNTERPART Nr.	APEX 150 CONN SYS	TOOL NO.	M410-MFG	ECO Loc. Code AN
DO NOT MEASURE DRAWING		DATE	NAME	TITLE
CREATED BY	2007-10-12	R BAUMAN		SEAL PLUG APEX 150 UNIVERSAL
MODIFIED BY	2013/12/13	Sucha SIAN		APEX 150 TERMINAL SYSTEM
CHECKED BY	2014/01/08	Matt MAJOR		
APPROVED BY	2014/01/08	Bob CUE		
FILE NAME	K36013-CUST	ESR NO.	-	CAT. NO. -
		DOCUMENT UNDER PDS CONTROL NO MODIFICATION ALLOWED OUTSIDE		
		DRAWING NUMBER		REV.
		K36013-CUST		E
		STATE		
		SERIAL RELEASED		
		PART NUMBER		REV.
		54241629		D
		CAD SYSTEM		pro / eng.
		DELPHI		
		DELPHI PACKARD ELECTRICAL/ELECTRONIC ARCHITECTURE		
		NOVI, MI		
		C		
		3RD ANGLE		
		DIMENSION IN MILLIMETERS		DWG SIZE
				A3
		APPROVAL LEVEL		
		SHEET		
		1 of 1		
		SCALE		5:1