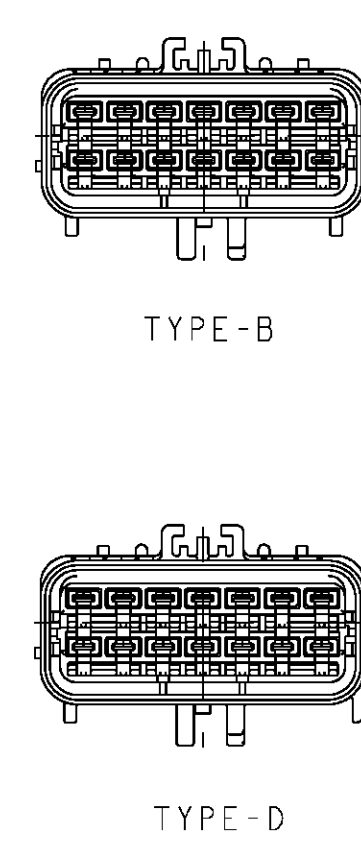
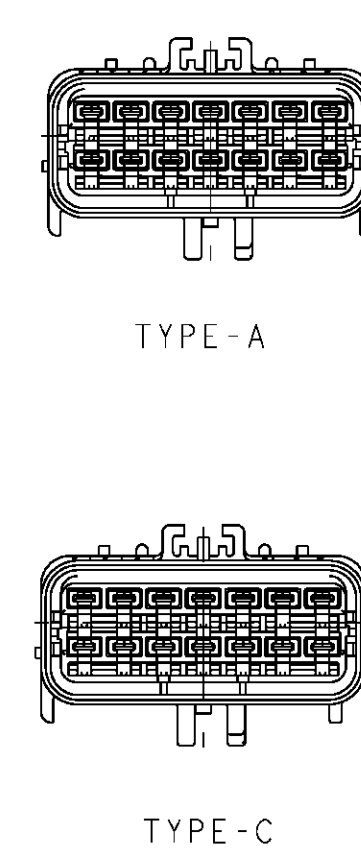
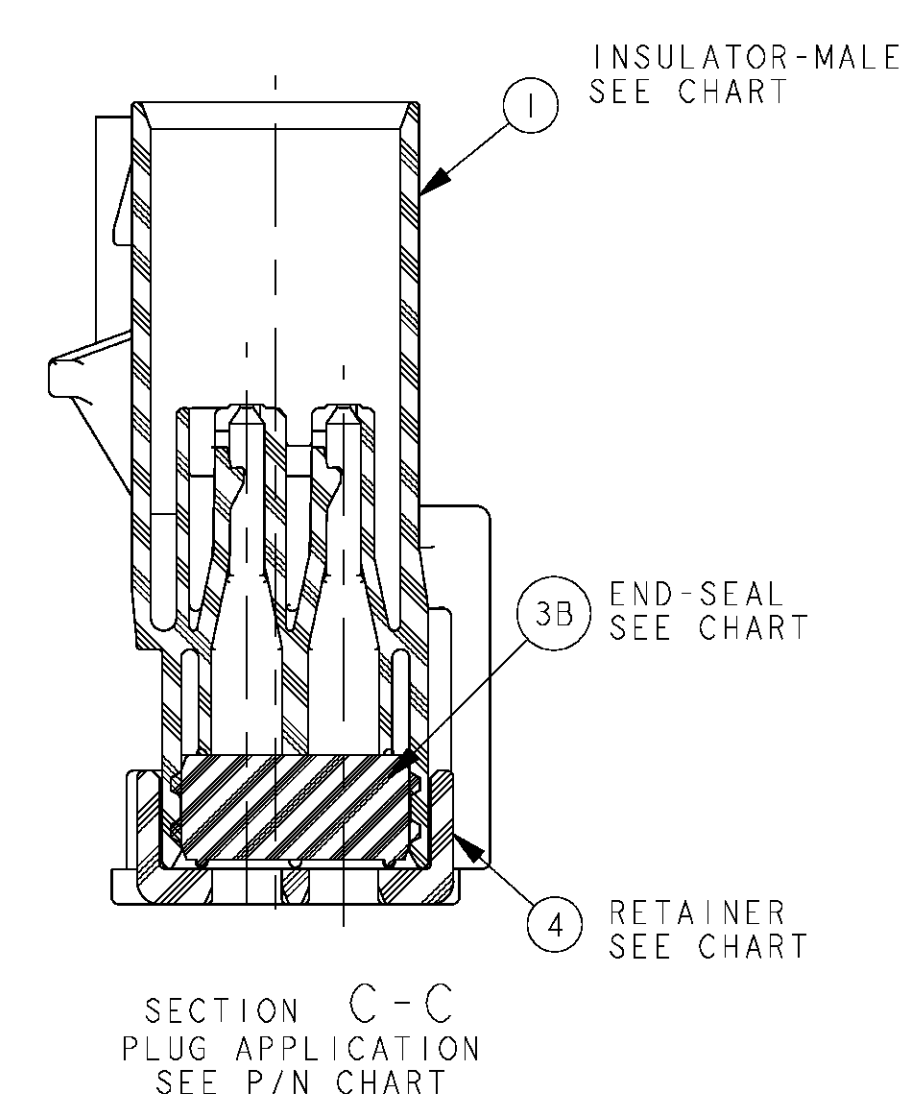
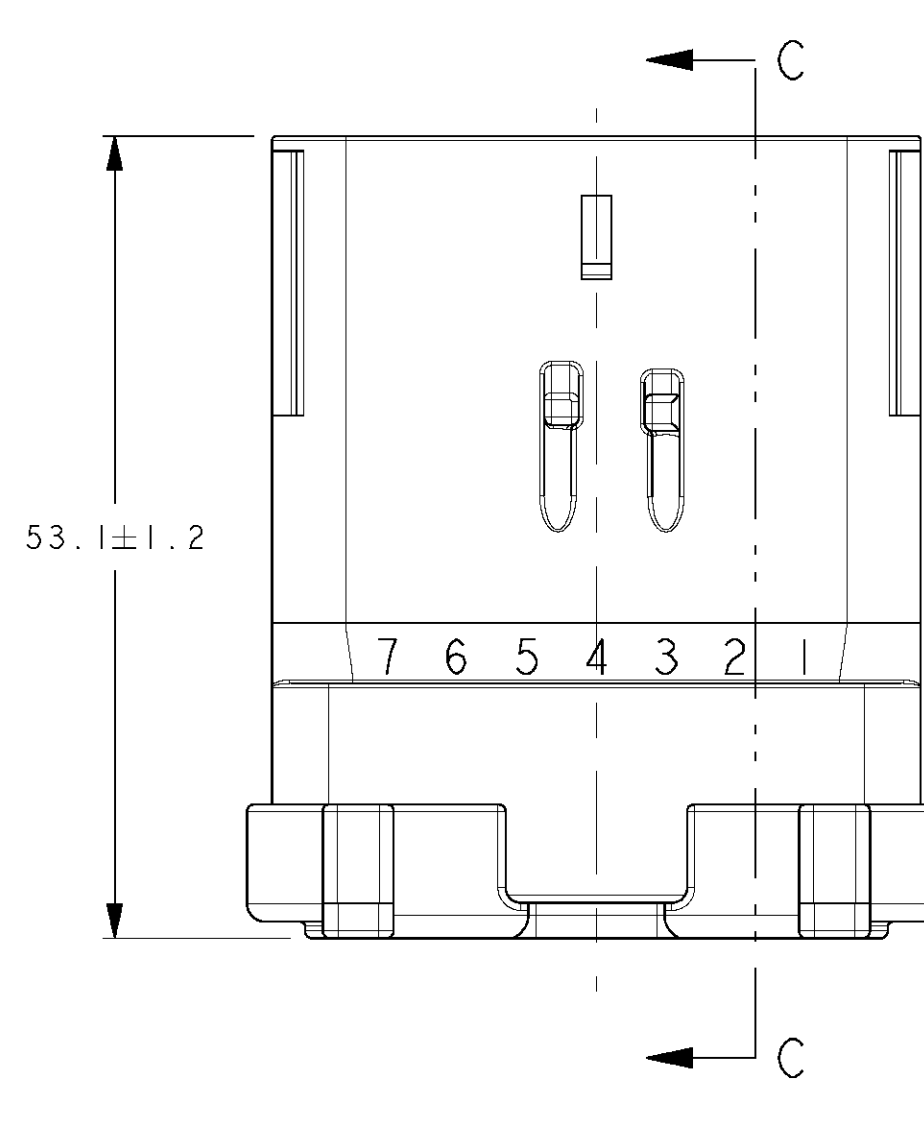
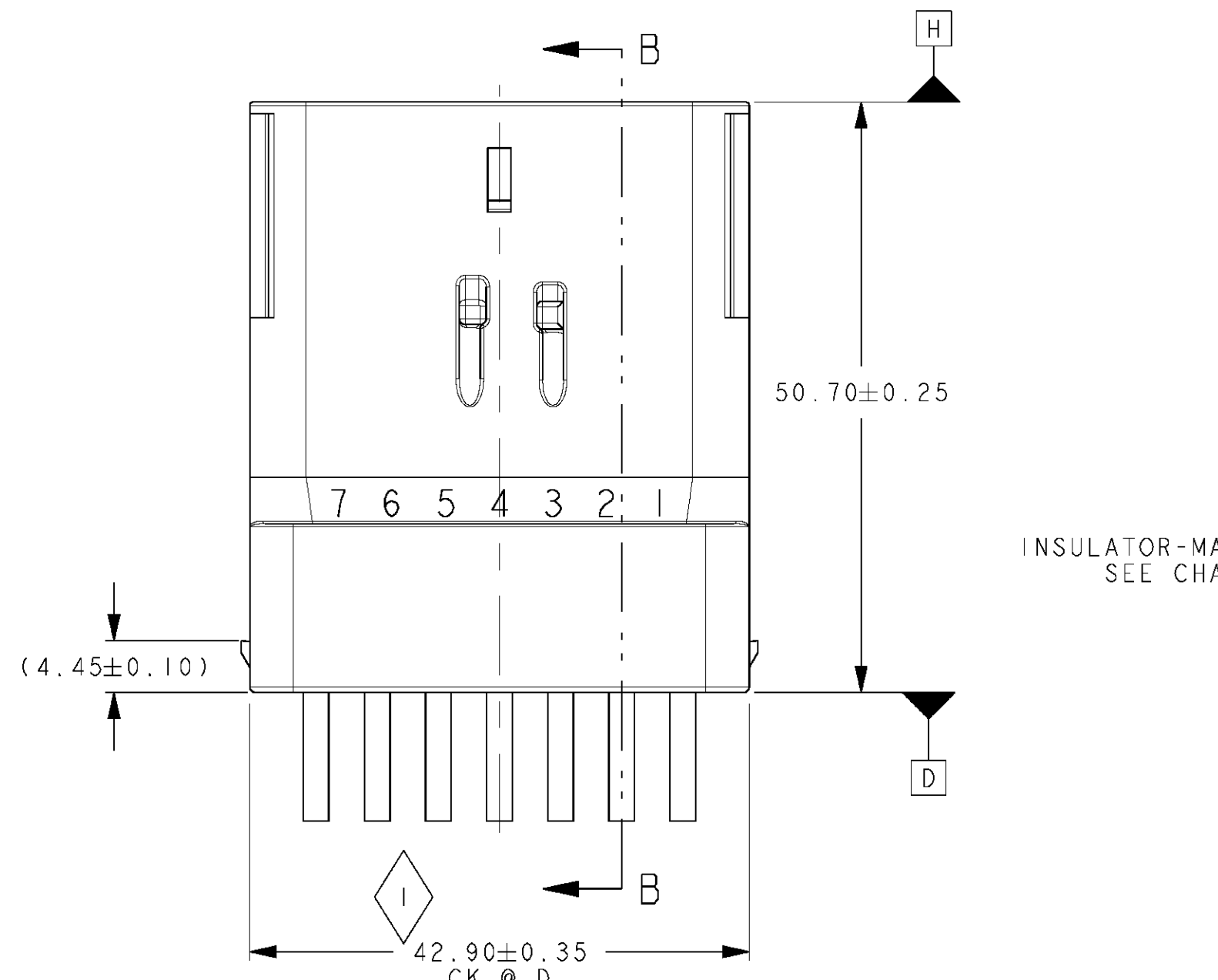
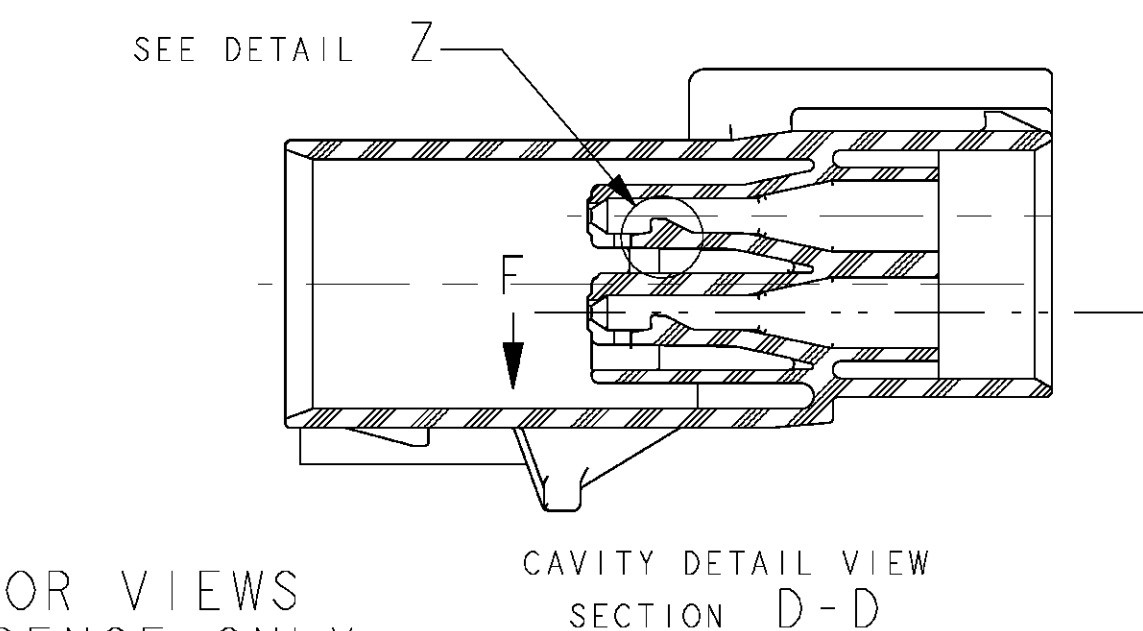
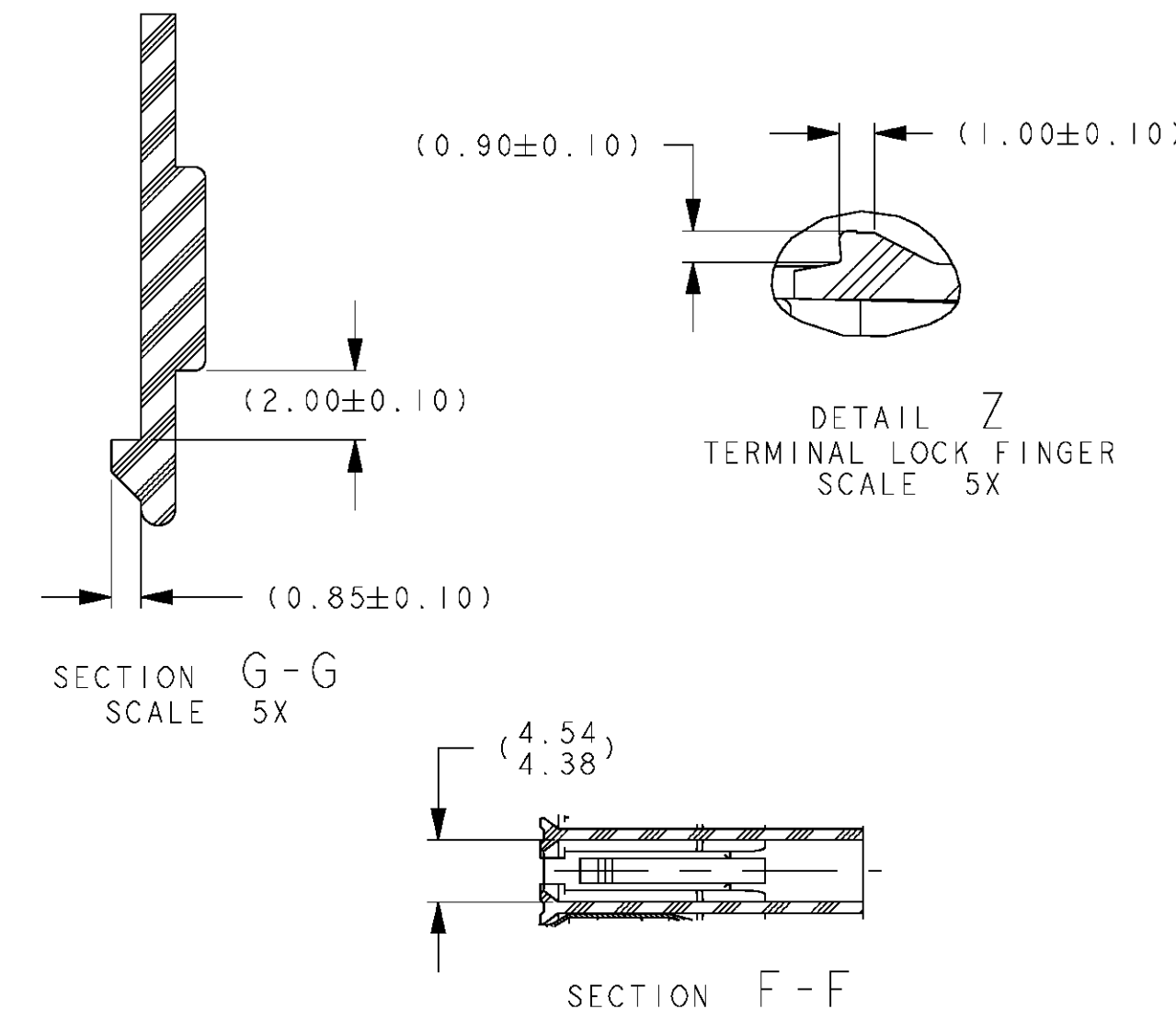
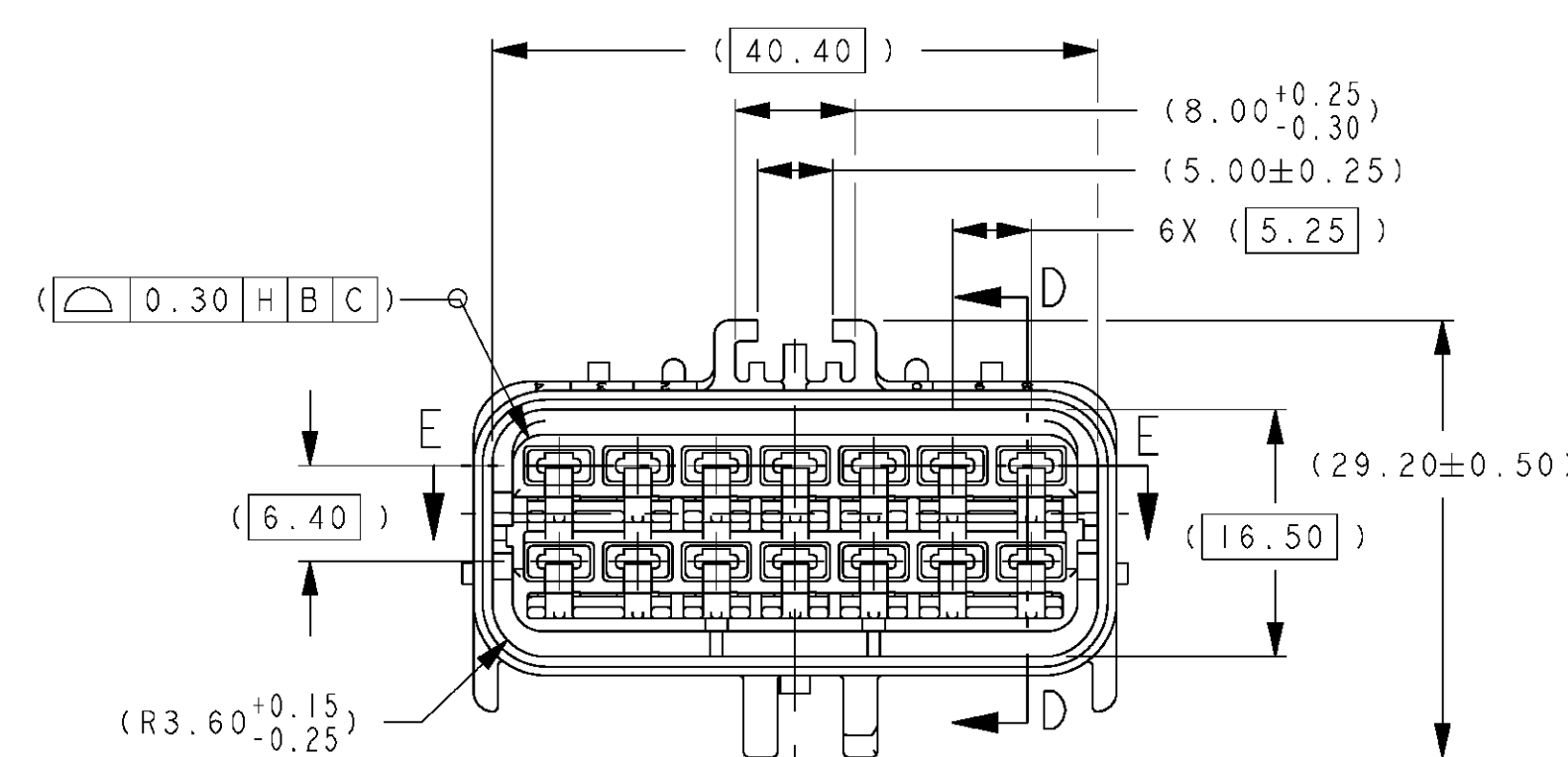
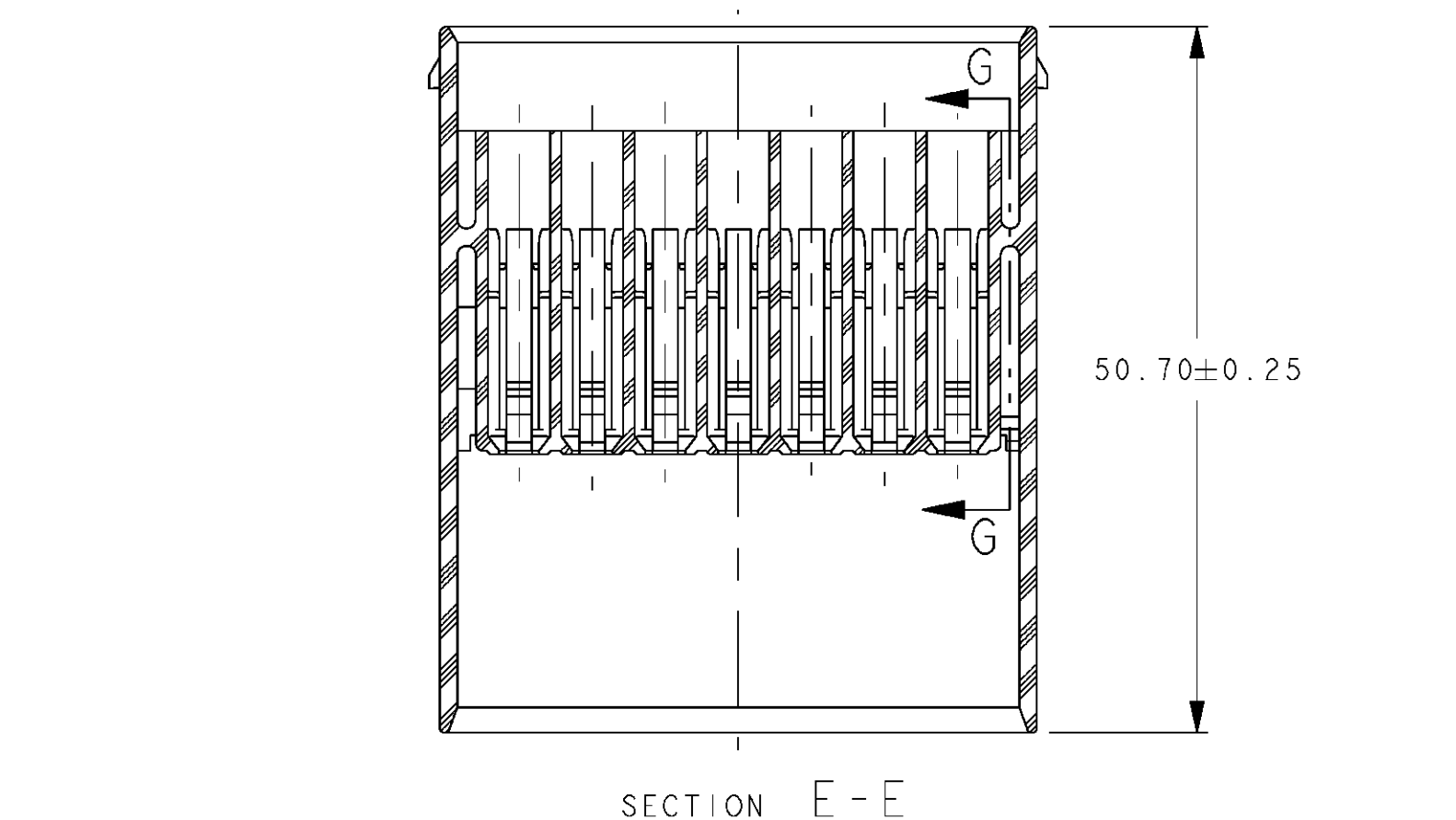


CHART - ASSEMBLY PART NUMBERS																																																																																																																																																																																																																																																																																																																																																																																																																																																																																																																																																																																																																																																																																																																																																																																																																																																																																																																																																																																																																																																																																																																																																																																																																																																																																								
UNSEALED									SEALED																																																																																																																																																																																																																																																																																																																																																																																																																																																																																																																																																																																																																																																																																																																																																																																																																																																																																																																																																																																																																																																																																																																																																																																																																																																																															
54201404	E	13581869	01	04687935	N/A	54201405	G	33501021	01	04687936	N/A	54201406	H	10757674	02	04687937	N/A	54201407	I	13753778	02A	04707241	N/A	54201408	J	15537596	01	N/A	N/A	54201409	K	33511472	01	N/A	N/A	54201410	L	13753778	02A	04707243	N/A	54201411	M	15537596	01	N/A	N/A	54201412	N	15537595	01	N/A	N/A	54201413	O	15537594	01	N/A	N/A	54201414	P	15537591	01	N/A	N/A																																																																																																																																																																																																																																																																																																																																																																																																																																																																																																																																																																																																																																																																																																																																																																																																																																																																																																																																																																																																																																																																																																																																																																																																																							
REQUIRED									REQUIRED																																																																																																																																																																																																																																																																																																																																																																																																																																																																																																																																																																																																																																																																																																																																																																																																																																																																																																																																																																																																																																																																																																																																																																																																																																																																															
1		1				1		1				1		1				1		1				1		1																																																																																																																																																																																																																																																																																																																																																																																																																																																																																																																																																																																																																																																																																																																																																																																																																																																																																																																																																																																																																																																																																																																																																																																																																																																														

	MIL	ACTIV	CHRYSLER	NON-CHRYSLER
	P/N'S	POL	P/N'S	P/N'S
	54201404	E 13581869	01 04687935	N/A
	54201405	G 33500121	01 04687936	N/A
			-	-----
	54201468	K 33511472	01 N/A	N/A
	54201415	H 10757674	02 04687933	GM15125233
	54201416	G 10757673	02 04687934	N/A
	54201417	L 13755778	02 04707241	N/A
	54201418	H 13755778	02A 04707243	N/A
	54201459	G 15337596	01 N/A	N/A
	54201462	J 15537959	01 N/A	N/A
	54201463	J 15537954	01 N/A	N/A
	54201464	J 15537959	01 N/A	N/A

540	540	540	540	540	540	540	540	540	COMPONENTS				
REQUIRED			REQUIRED			ITEM	MVL	APTIV	PART NAME	MATERIAL			
1	1	1	1	1	1		54201424	15537324	INS-MALE INDEX A; BLK	NYLON 66			
1	1	1	1	1	1		54201425	15537325	INS-MALE INDEX B; LT GREY	NYLON 66			
							54201426	15537326	INS-MALE INDEX C; DK GREY	NYLON 66			
		1		1		1	54201427	15537327	INS-MALE INDEX D; NATURAL	NYLON 66			
							54201431	15537448	WEDGE- MALE; RED	NYLON 66			
			1	1	1		N/A	33401040	END SEAL; DK BLUE	SILICONE			
							54201457	15537419	END SEAL; BRT YELLOW (NO HOLES)	SILICONE			
			1	1	1	1	1	1	1	SILICONE			
			1	1	1	1	1	1	1	NYLON 66			
2	2	2	2	2	2	2	CONNECTOR	ASSEMBLY	X TEMPERATURE CLASS PER SAE J55/PCAP-2 REV.5.				



POLARIZATION OPTIONS
FULL SIZE

- NOTES:
- 1 QUALITY ASSURANCE REQUIREMENTS PER CHRYSLER PS-7300: 1 SPC DATA REQUIRED
 - 2 ENGINEERING APPROVAL OF SUPPLIER SAMPLES IS REQUIRED PRIOR TO AUTHORIZATION OF PART PRODUCTION
 - 3 CHANGES IN DESIGN COMPOSITION OR PROCESSING FROM THE PART PREVIOUSLY APPROVED FOR PART PRODUCTION REQUIRES PRIOR ENGINEERING APPROVAL
 - 4 WIRING FABRICATORS MUST PURCHASE FROM SOURCES SHOWN
 - 5 ALL SEALED APPLICATIONS WITH 33401040 MALE SEAL CAN BE USED WITH FOLLOWING INSULATION RANGES:
01. 0.1 TO 0.4 Ø (20AWG TO 10AWG) ALL CIRCUITS
01. 70 TO 0.3 Ø (0.75mm² TO 4mm²) ALL CIRCUITS
02. 0.1 TO 0.4 Ø (6 CIRCUITS WITH 5mm² 2 ON ENDS & 2 AT CENTER AND REMAINING 6 CIRCUITS 0.75mm² TO 4mm²)
 - 6 ALL NON-SEALED APPLICATIONS MAY BE USED WITH ANY WIRE 01.40 TO 0.4 Ø (22AWG TO 10AWG) (0.5mm² TO 5mm²) EXCEPT AS NOTED PROVIDING THAT A TERMINAL GRIP FOR THAT CORE/INSULATION COMBINATION IS SHOWN ON THE MALE TERMINAL DRAWING
NOTE: MAX. INSULATION CRIMP WIDTH = 4.50
MAX. INSULATION CRIMP HEIGHT = 4.50
MAX. INSULATION = 0.4-2.0 (10AWG OR 5mm² ISO THIN WALL)
 - 7 USE WITH CAVITY PLUG MVL 54200005 DELPHI 15316894 WHEN REQ'D
USE WITH DOUBLE X-MAS TREE CLIP MVL 54200010 W/FORWARD STOP WHEN REQ'D
USE WITH SINGLE X-MAS TREE CLIP CHRYSLER 04107091 WHEN REQUIRED
USE WITH SINGLE X-MAS TREE CLIP CHRYSLER 04625797 WHEN REQUIRED
USE WITH 2.80MM APX MALE TERM PER MVL C15005-CUST SYM ABOUT CENTERLINE FOR 180° ORIENTATION
 - 8 TEST METHOD PER SAE/USCAR-2 REV.5, CONNECTOR ENGAGE & DISENGAGE WITH FEMALE LATCH DEPRESSED FORCE NOT TO EXCEED 142N (32LBS/PF-7521T)) FOR THIS SYSTEM
PRESSURE 3 PSI (22 KPA) PER TEST PF-7521T)
WEDGE SEATING FORCES - 150N MAX
X-MAS TREE CLIP INSERTION FORCES - 75N MAX
 - 9 JETTING, MOLD & CAVITY I.D. SIGNIFIES TOOL OWNERSHIP, FOR REFERENCE
 - 10 ANNUAL QUALITY REQUIREMENTS
IT IS PERMISSIBLE TO PERFORM CONTINUOUS CONFORMANCE PER MVL SPECIFICATION #A0A-001 INSTEAD OF ANNUAL LAYOUT & ANNUAL PV REQUIREMENTS OF QS-9000 SECTION 2 & PF-9600
 - 11 ALL NON-REFERENCE DIMENSIONS ARE REQUIRED
- USE INDEX A, BLACK SEALED AND UNSEALED FOR ALL AFFECTED INSULATOR CAVITIES
- CURRENT PRODUCTION TOOLING
- POINT OF LAST RUN
 - 12 SERVICE TOOLING GUIDE INFORMATION PER APX TRAINING MANUAL
 - 13 MUST CONFORM TO THE FOLLOWING CHRYSLER/YNA STANDARDS:
1. SAE/USCAR-2 REV 5 EXCEPT AS NOTED ABOVE
2. PS-7300 QUALITY ASSURANCE (CHRYSLER)
3. MS-9502 SEAL APPL. 150 °C
4. MS-8288 SEAL APPL. 125 °C
5. PS-9227 DATA EXCHANGE (CHRYSLER), (G009-7 YNA)
6. PS-10052 INFORMATION SECURITY (CHRYSLER)
 - 14 THIS DRAWING (H59016) REPLACED CHRYSLER DRAWING 04687887 REV "H"
 - 15 MVL SUPPLIER CODE: 52772 OR 52772H

[illegible]