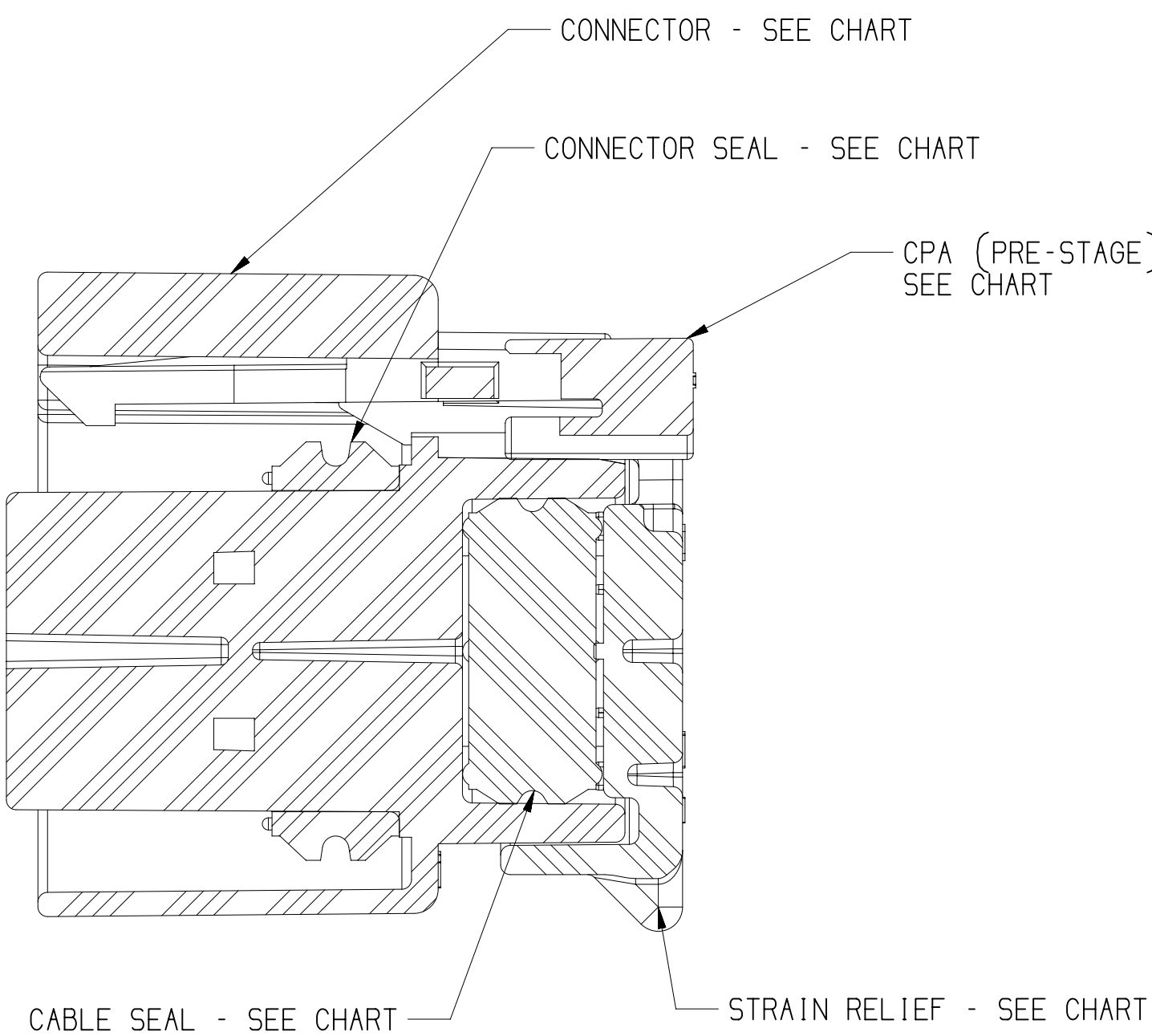
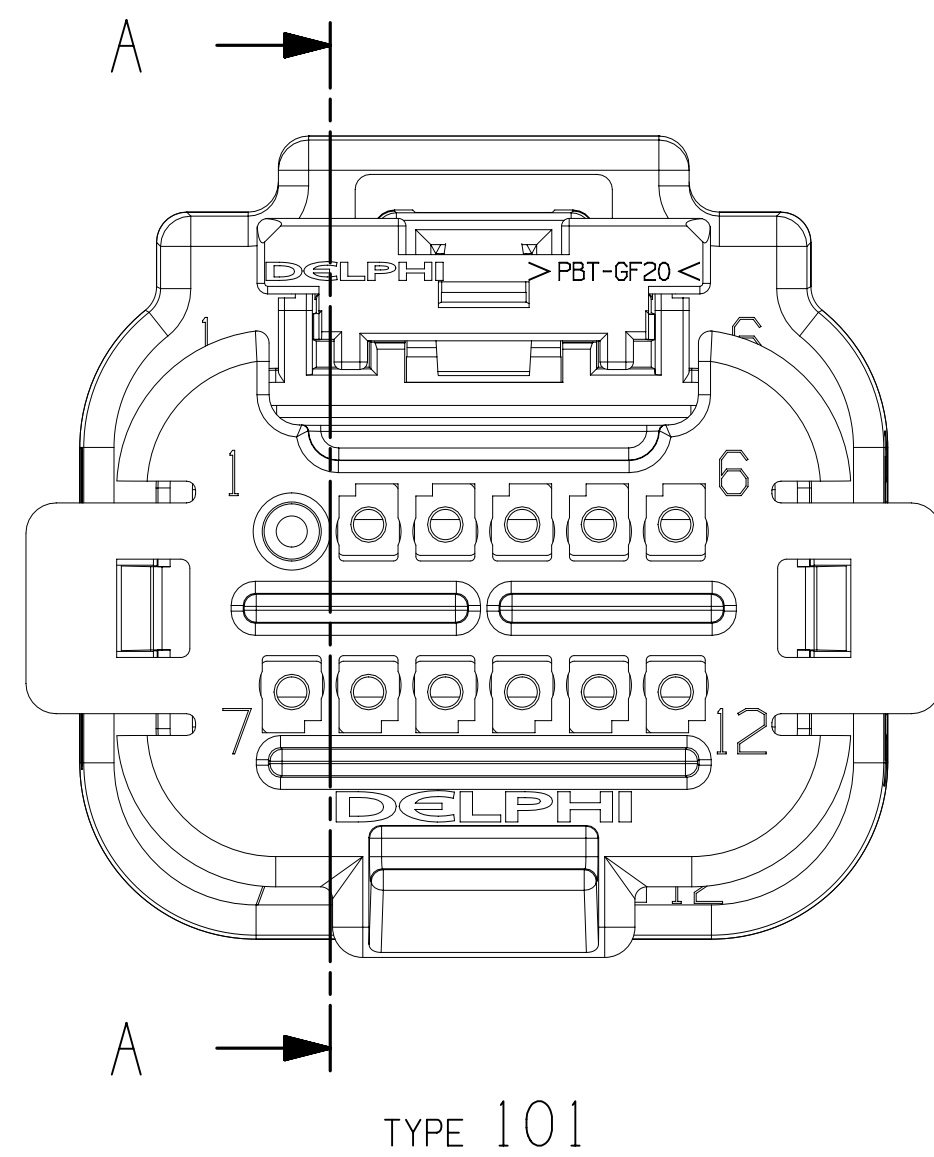
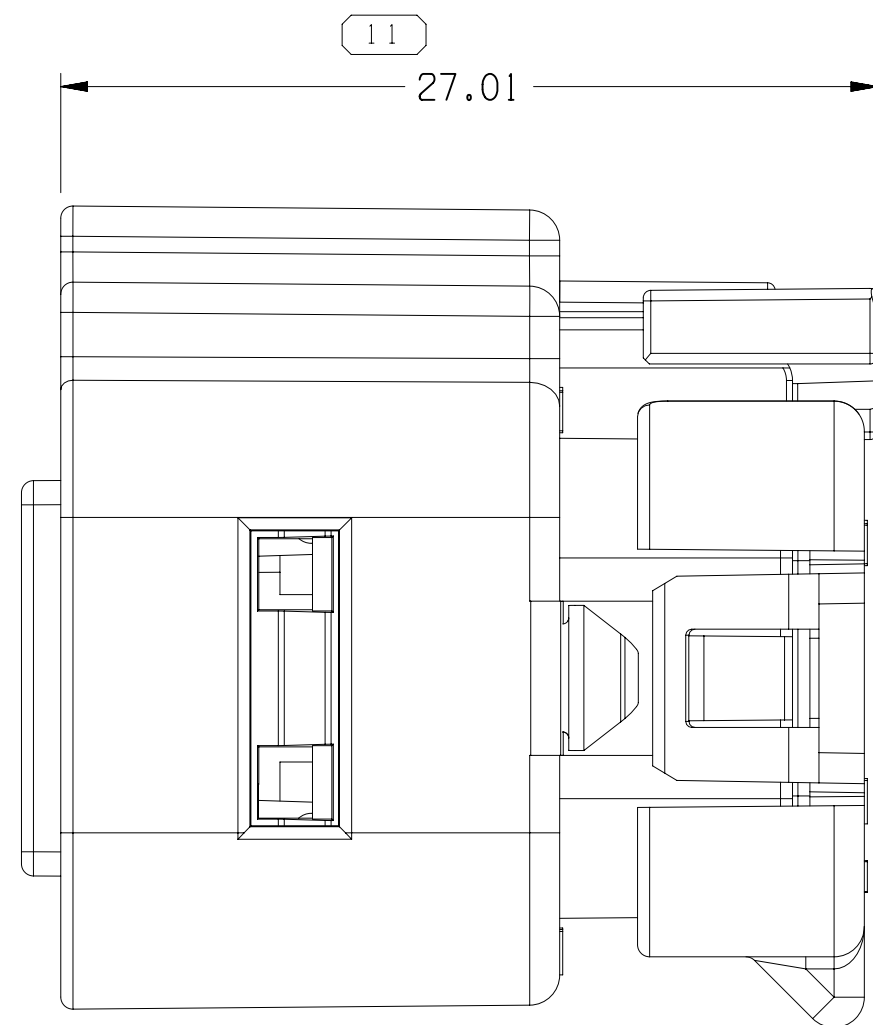
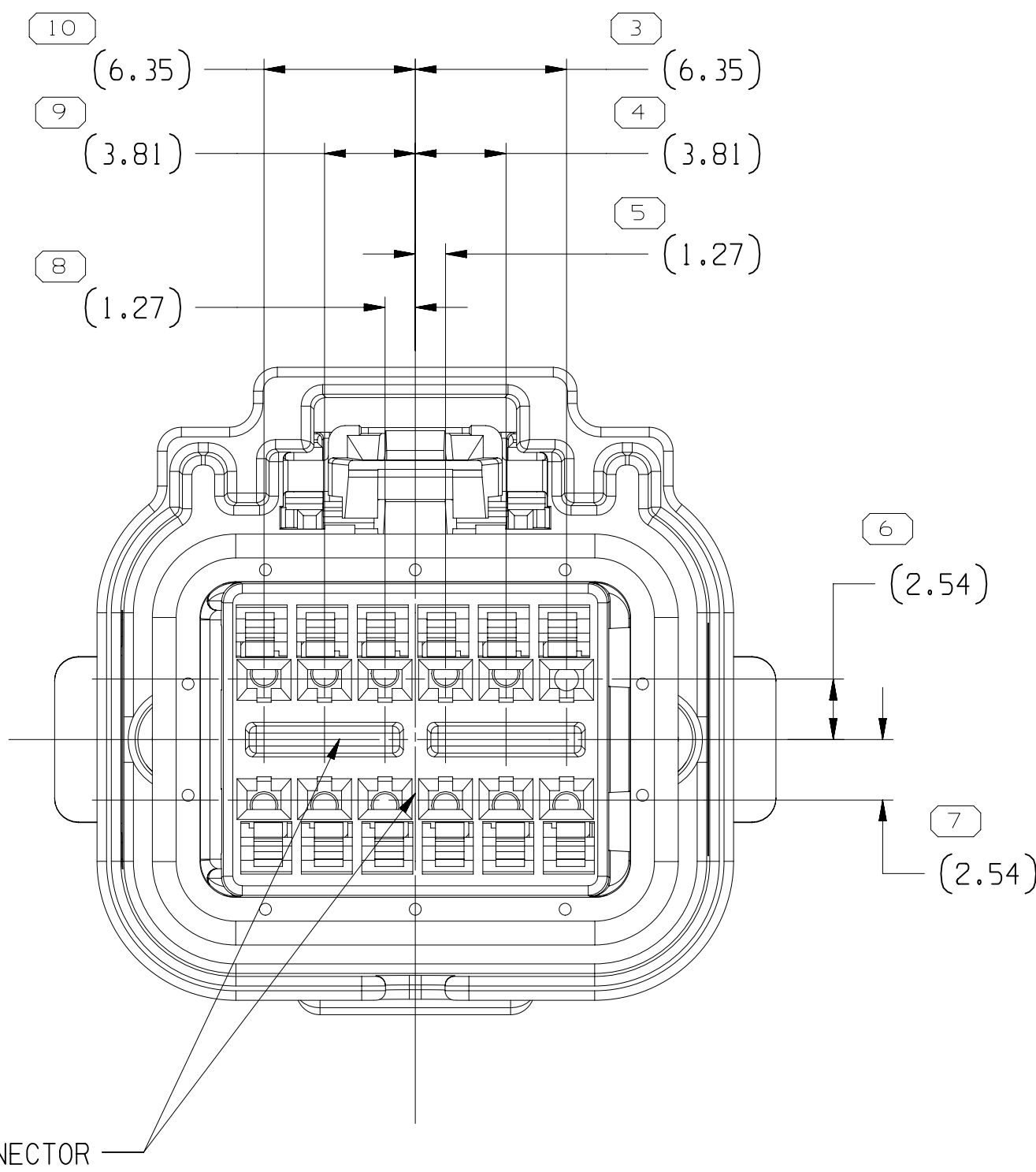
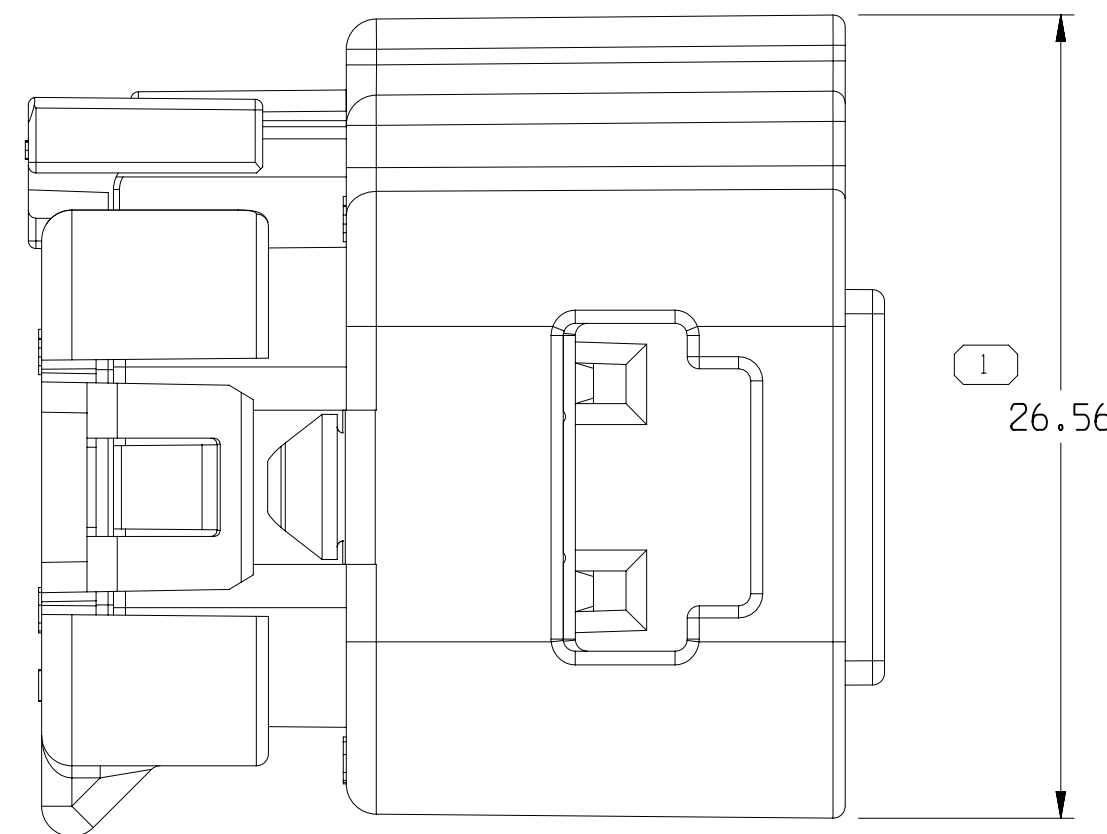
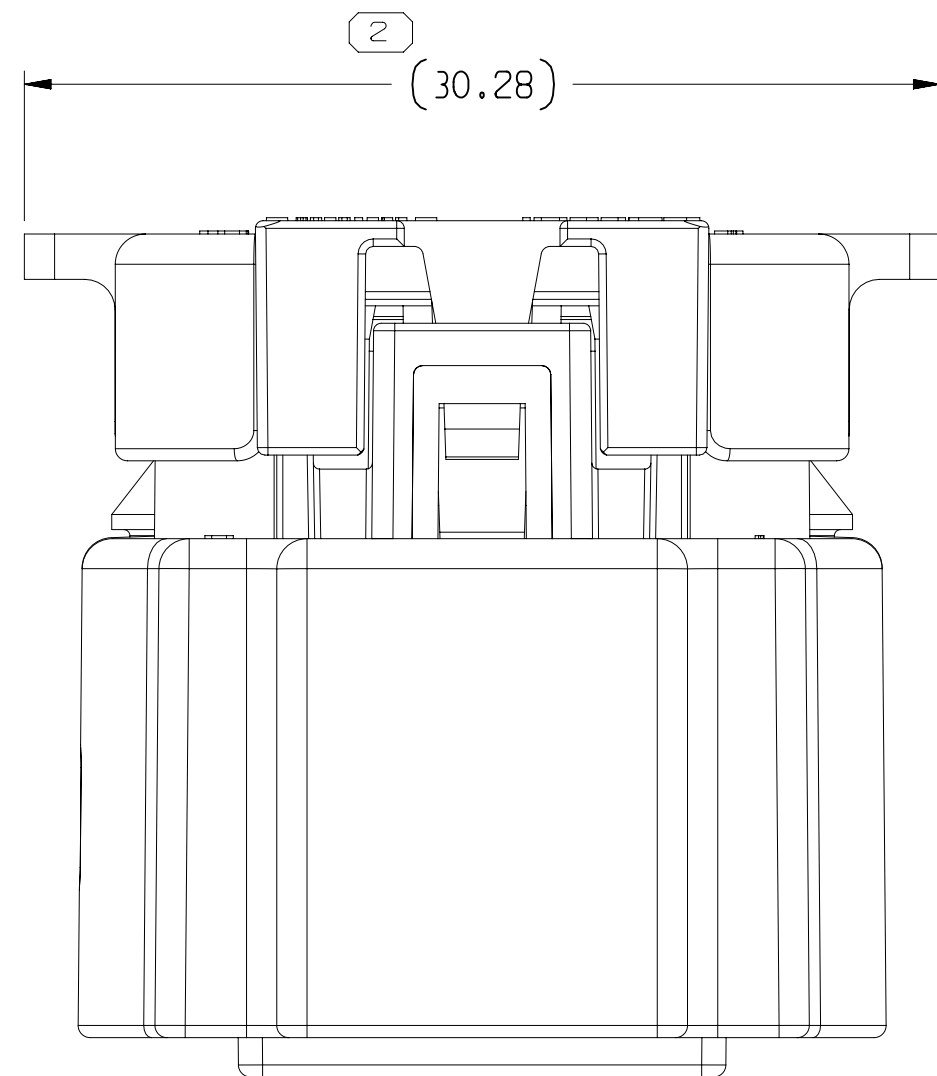
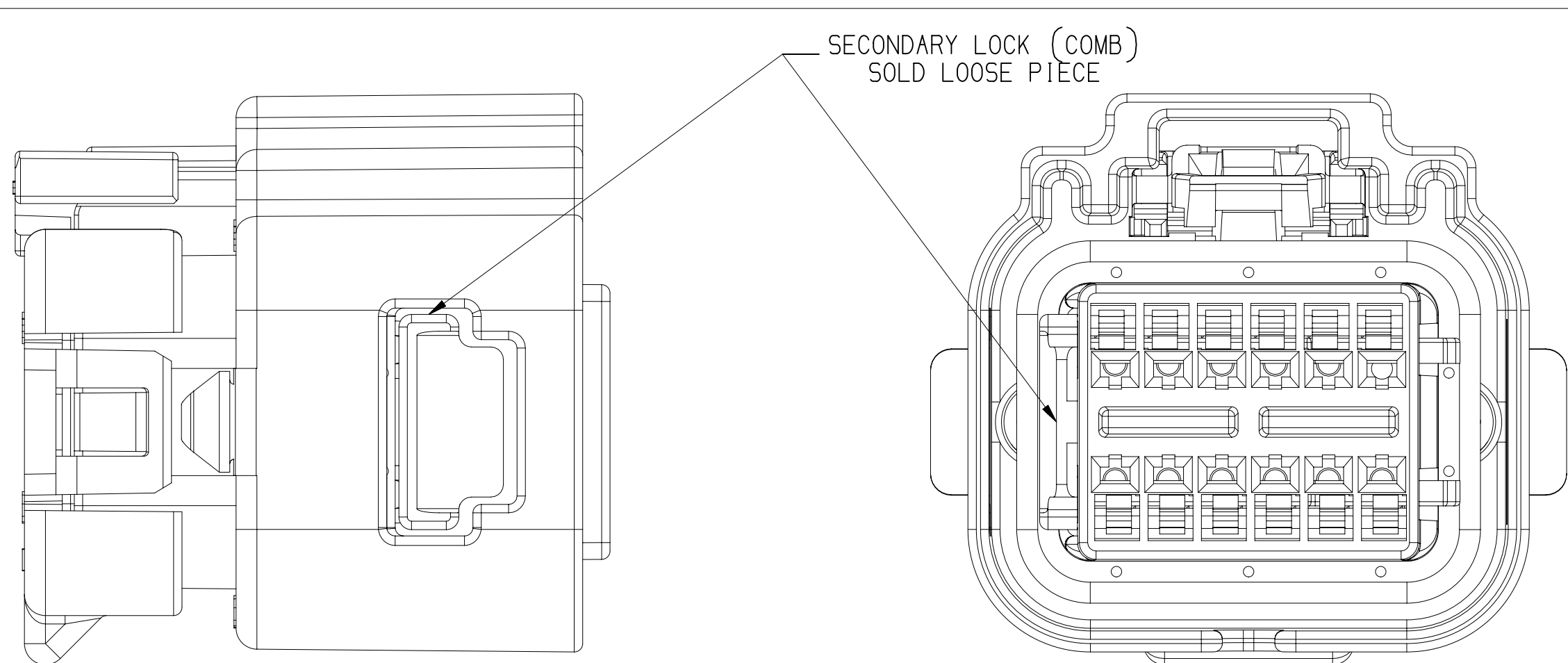


TYPE 102  
SAME AS TYPE 101  
EXCEPT AS SHOWN



SECTION A - A



ASSEMBLY VIEW FOR REFERENCE ONLY

35581928	01	-	35581926	13877794	35545339	13960982	13877795	101	X	-	-	-	-	-	-	-	-	-	1		
35581927	01	-	35581926	13877794	35545339	15488490	13877795	101	X	-	-	-	-	-	-	-	-	-	1		
35545341	01	-	13877791	13877794	35545339	13960982	13877795	101	X	-	-	-	-	-	-	-	-	-	1		
35545340	01	-	13877791	13877794	35545339	15488490	13877795	101	X	-	-	-	-	-	-	-	-	-	1		
35571103	01	-	13877791	13877794	13877793	15488490	35571098	102	X	-	-	-	X	-	-	-	-	-	2		
13877790	01	AB	13877791	13877794	13877793	15488490	13877795	101	X	-	-	-	-	-	-	-	-	-	1		
PART NO	REV	N/P	CONN	CONN SEAL	CABLE SEAL	CPA	STRAIN RELIEF	TYPE	1	2	3	4	5	6	7	8	9	10	11	12	BLOCKED CAVITIES COUNT

NOTES

- UNLESS OTHERWISE SPECIFIED AND/OR INDICATED:  
DIMENSIONS ARE TO FACE OF VIEW SHOWN AND AUTOMATICALLY ROUNDED BY COMPUTER FOR INSPECTION (SEE MATH MODEL FOR PRECISE DIMENSIONS). FOR ALL OTHER DIMENSIONS NOT SHOWN BUT REQUIRED FOR TOOL BUILD, SEE MATH MODEL FOR PRECISE TOOL PATH DATA.
- THIS PRODUCT IS NOT CATEGORIZED AS AN APPEARANCE ITEM. MINOR IMPERFECTIONS INCLUDING, BUT NOT LIMITED TO, FLOW MARKS, COLOR BLEMISHES, GATE VESTIGE, AND SOFT FLASH THAT DO NOT AFFECT THE FIT, FORM, OR FUNCTION OF THE PART ARE PERMISSIBLE PER EANP\_4-3-CS\_01-EN.
- FOR APPLICATION DATA SEE THE APPLICATION DRAWING.
- WHEN PARTS ARE SHIPPED THEY MUST BE PACKED IN PLASTIC BAGS OR SHIPPING CONTAINERS MUST BE LINED WITH PLASTIC LINERS. BAGS OR LINERS MUST BE SEALED TO AVOID FOREIGN MATTER.
- THIS PART IS NOT CONTROLLED FOR AUTOMATIC FEEDING.
- THE FORCE TO DISENGAGE THE SECONDARY LOCK CAN BE BETWEEN 8 AND 13N.

(N/A) PROCESS SENSITIVE DIMENSION											
DIMENSIONS ENCLOSED IN ( ) INDICATE RETRACTION DIMENSIONS AND NO TOLERANCE LIMITS ARE ESTABLISHED											
TOLERANCE UNLESS OTHERWISE SPECIFIED											
ANGULAR TOLERANCE ±2°											
CHART 1											
FROM TO											
1 ±0.15 2 ±0.2 3 ±0.3 4 ±0.4 5 ±0.5 6 ±0.6 7 ±0.8 8 ±1 9 ±1.2											

A - LINE DRAWN THROUGH A PART NUMBER INDICATES THAT PHYSICAL PARTS ARE NOT AVAILABLE FOR ORDERING.	
PART NUMBERS THAT DO NOT HAVE A LINE PRESENT INDICATE THAT PHYSICAL PARTS ARE AVAILABLE FOR ORDERING.	
CONTACT APTIV SALES TO ASSURE AVAILABILITY OF PARTS.	
DWG TYPE: PART DRAWING	
STYLE: D	
VOLUME (CM³):	
DISTR CODE:	
UNLESS OTHERWISE SPECIFIED	
THIS DOCUMENT IS IN ACCORDANCE WITH ASME Y14.5M-1994 AS AMENDED BY THE 01 GLOBAL DIMENSIONING AND TOLERANCING ADDENDUM (2001). SEPARATE PATTERNING OF FEATURES MAY BE SHOWN SEPARATELY REGARDLESS OF DATUM REFERENCES.	
ALL DIMENSIONS ARE IN MILLIMETERS	
REFERENCE:	
THIRD ANGLE PROJECTION	DO NOT SCALE
USE MATH DATA	USE MATH DATA

• APTIV •			
CONNECTION SYSTEMS			
WARREN, OH			
COPYRIGHT 2021 APTIV. ALL RIGHTS RESERVED.			
THIS DRAWING IS THE PROPERTY OF APTIV AND CONTAINS APTIV CONFIDENTIAL INFORMATION. THE REPRODUCTION, DISTRIBUTION AND UTILIZATION OF THIS DOCUMENT OR ITS RELATED CAD DATA, AS WELL AS COMMUNICATION OF ANY CONTENT TO OTHERS, WITHOUT EXPRESS AUTHORIZATION, IS PROHIBITED.			
DATE:		DATE:	
APV01: A. GARCIA CABELLO		31MY21	
APV02: A. GARCIA CABELLO		31MY21	
APV03: SERGIO VILLARREAL		01JN21	
APV04:			
APV05:			
SUBSTANCES OF CONCERN AND RECYCLED CONTENT PER APTIV (094900)			
DRAWING NAME: TAXI ASM CONN 12 F OCS 1.2 SLD			
DRAWING NUMBER: 35571107			
SIZE: A0	SCALE: 4:1	FRAME NO: 1 OF 1	SHEET NO: 1 OF 1
STG: U	REV: 02	N/P: -	