
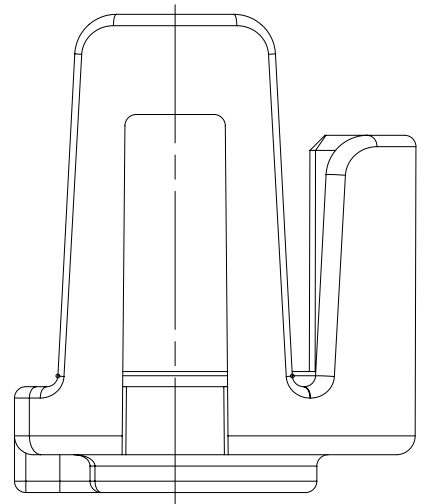
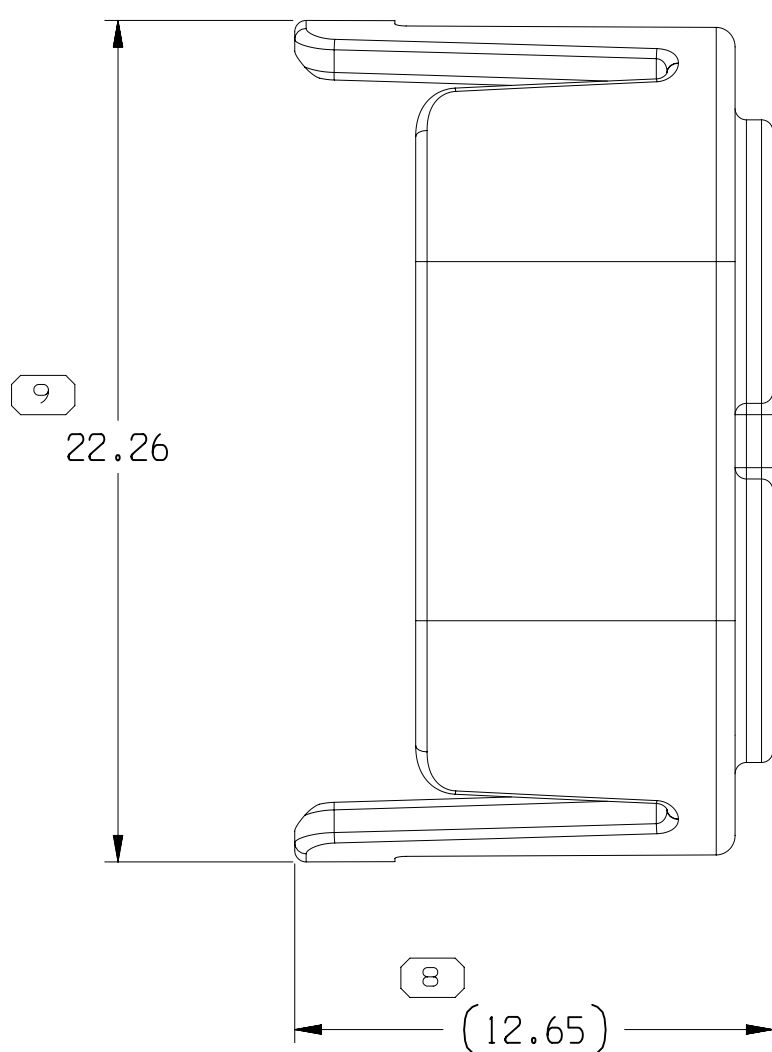
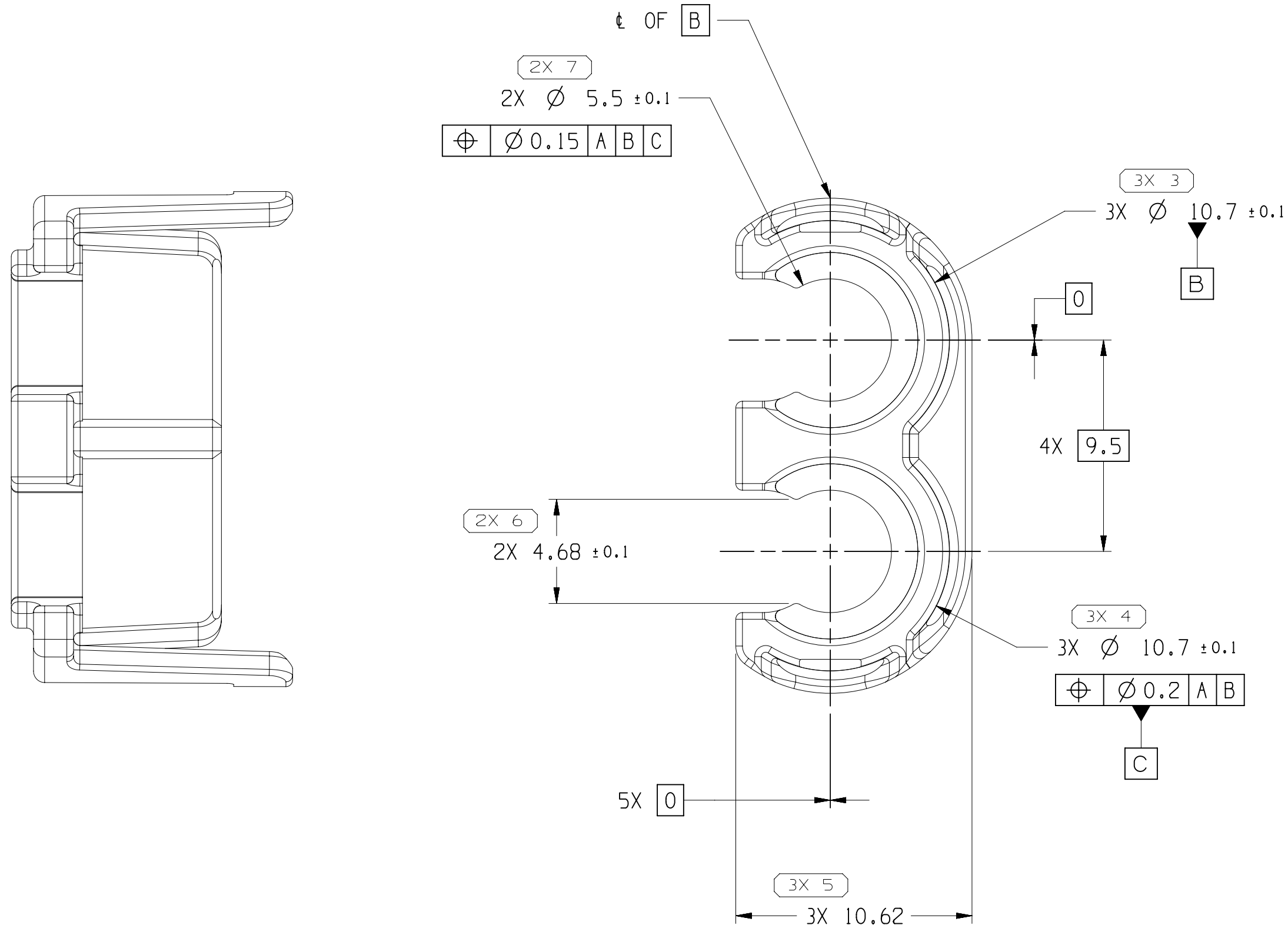
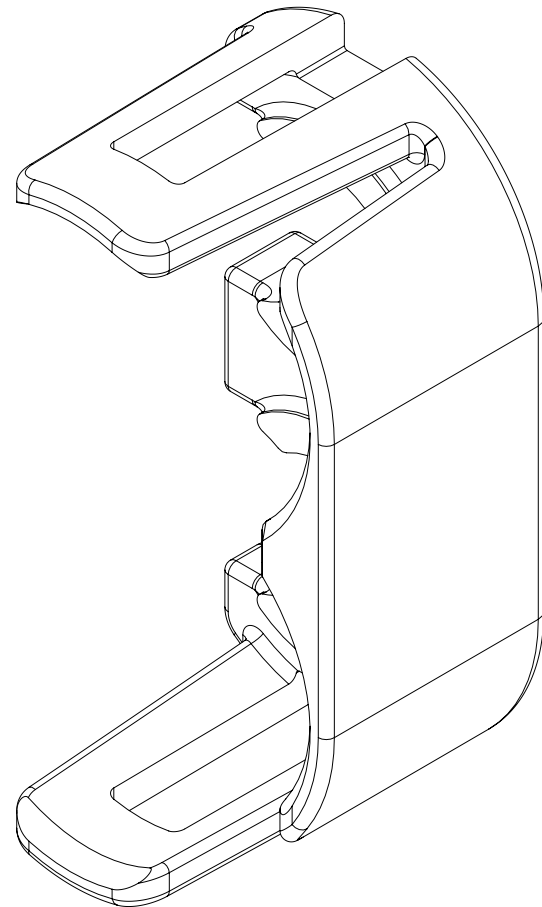
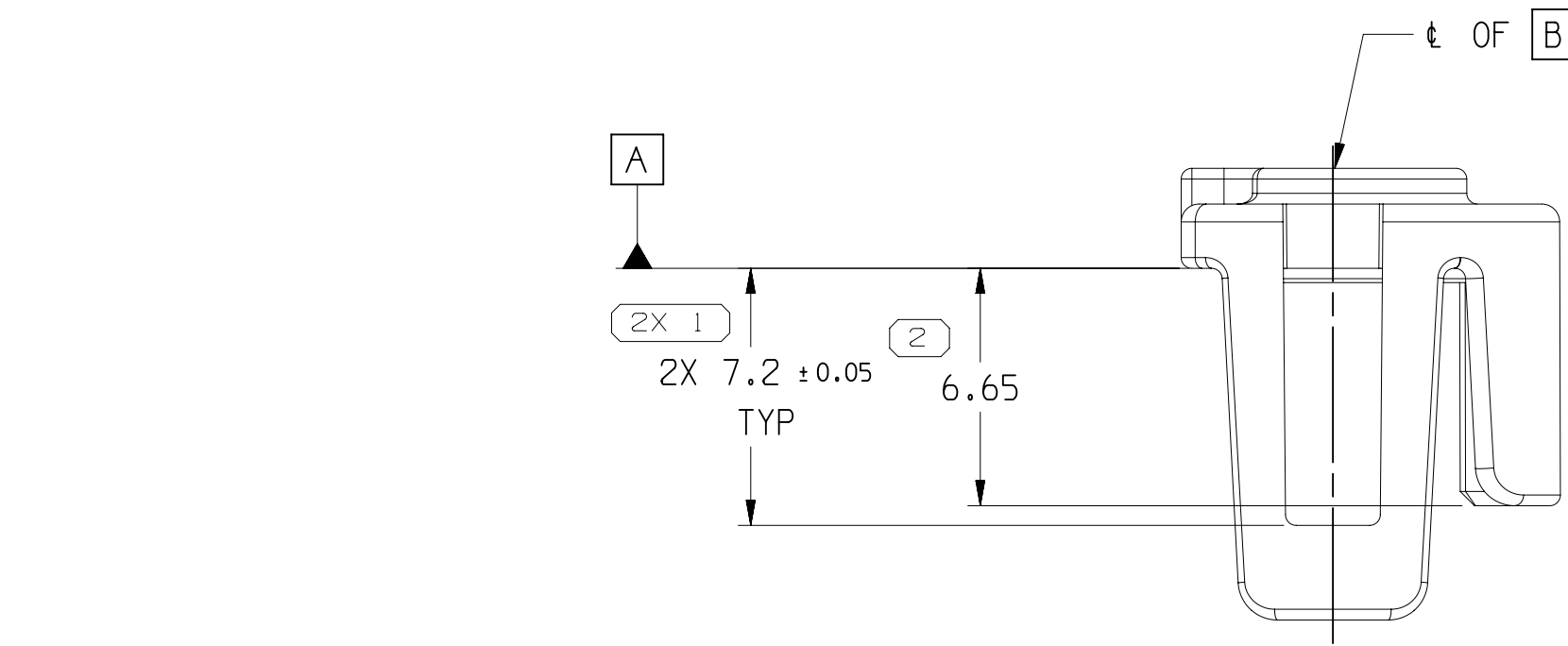


SYMBOL DEFINITION		
A DIMENSION WITHOUT AN INSPECTION REPORT SYMBOL  DOES NOT REQUIRE INSPECTION. IT MAY BE CONTROLLED ON THE INDIVIDUAL COMPONENT DRAWING.	TOTAL NO OF INSPECTIONS REQUIRED	18
	LAST NO. USED	9

MISSING SYMBOLS		DWG STATUS					ZONE	REVISION HISTORY	AUTH	DR	APVD 1	APVD 2
NO MISSING SYMBOL NUMBER		DATE	STG	REV	N/P	CHG						
		21FE22	R	01	-	-		35331387 WAS SEPARATE DWG AND 35641507 RELEASED PART DRAWING	556400	AN	RAK	DJS
		11N022	R	02	-	-	-	UPDATED PART AVAILABILITY	558932	KPS	RAK	DJS



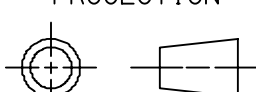
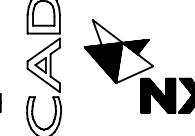

#### NOTES

- UNLESS OTHERWISE SPECIFIED AND/OR INDICATED: DIMENSIONS ARE TO FACE OF VIEW SHOWN AND AUTOMATICALLY ROUNDED BY COMPUTER FOR INSPECTION (SEE MATH MODEL FOR PRECISE DIMENSIONS). FOR ALL OTHER DIMENSIONS NOT SHOWN BUT REQUIRED FOR TOOL BUILD, SEE MATH MODEL FOR PRECISE TOOL PATH DATA.
- THIS PRODUCT IS NOT CATEGORIZED AS AN APPEARANCE ITEM, MINOR IMPERFECTIONS INCLUDING, BUT NOT LIMITED TO, FLOW MARKS, COLOR BLEMISHES, GATE VESTIGE, AND SOFT FLASH THAT DO NOT AFFECT THE FIT, FORM, OR FUNCTION OF THE PART ARE PERMISSIBLE PER EANP\_4-3-CS\_01-EN.
- THIS PART USED IN ASSEMBLIES SHOWN ON TAXI 35331363 AND 35331372.
- REFERENCE MATING COMPONENTS OR EQUIVALENT SHOWN ON TAXI 35331352 & 35331357.

	35641507	01	AA	102	POLYESTER COMPOUND LT GREY	0.543
	35331387	02	AC	101	POLYESTER COMPOUND NATURAL	0.543
PART	NO	REV	N/P	TYPE	MATERIAL SPECIFICATION AND COLOR	VOLUME (CM <sup>3</sup> )

9	PROCESS SENSITIVE DIMENSION
DIMENSIONS ENCLOSED IN ( ) INDICATE REFERENCE DIMENSIONS AND NO TOLERANCE LIMITS ARE ESTABLISHED	

DIMENSIONAL RANGE (MM)												CHART	ET
FROM	> 0	> 20	> 30	> 70	> 100	> 150	> 200	> 250	> 300	> 400			
TO	20	30	70	100	150	200	250	300	400				
TOLERANCE UNLESS OTHERWISE SPECIFIED													
	±0.15	±0.2	±0.3	±0.4	±0.5	±0.6	±0.8	±1	±1.2				
ANGULAR TOLERANCE ±2°													

A LINE DRAWN THROUGH A PART NUMBER INDICATES THAT PHYSICAL PARTS ARE NOT AVAILABLE FOR ORDERING.	
PART NUMBERS THAT DO NOT HAVE A LINE PRESENT INDICATE THAT PHYSICAL PARTS ARE AVAILABLE FOR ORDERING.	
CONTACT APTIV SALES TO ASSURE AVAILABILITY OF PARTS.	
DWG TYPE	
PART DRAWING	
STYLE	
VOLUME (CM <sup>3</sup> )	DISTR CODE
SEE CHART	D
UNLESS OTHERWISE SPECIFIED	
THIS DOCUMENT IS IN ACCORDANCE WITH ASME Y14.5-2009. SEE APTIV ENGINEERING DESIGN STANDARD B6 2017 FOR ISO 1101:2004 RECONCILIATION REQUIREMENTS.	
ALL DIMENSIONS ARE IN MILLIMETERS	
REFERENCE	
THIRD ANGLE PROJECTION	DO NOT SCALE
	
USE MATH DATA	

<b>• APTIV •</b>						
CONNECTION SYSTEMS						
Chennai, India						
COPYRIGHT 2022 APTIV. ALL RIGHTS RESERVED.						
THIS DRAWING IS THE PROPERTY OF APTIV AND CONTAINS APTIV CONFIDENTIAL INFORMATION. THE REPRODUCTION, DISTRIBUTION AND UTILIZATION OF THIS DOCUMENT OR ITS RELATED CAD MATH DATA, AS WELL AS COMMUNICATION OF ANY CONTENT TO OTHERS, WITHOUT EXPRESS AUTHORIZATION, IS PROHIBITED.						
DR	DATE					
APVD1 A.NALLUSAMY	21FE22					
APVD2 ABHAYA KISHORE	21FE22					
APVD3 DALE J.SMUTNY	21FE22					
APVD4						
APVD5						
SUBSTANCES OF CONCERN AND RECYCLED CONTENT1094900110949001						
MATERIAL						
SEE CHART						
DRAWING NAME						
TAXI LOCK RETAINER						
DRAWING NUMBER						
35641559						
SIZE	SCALE	FRAME NO	SHEET NO	STG	REV	N/P
A1	5:1	1 OF 1	1 OF 1	R	02	-