

# Crimp - Validation

APN: 10725666  
 Material: CUMG1  
 Surface: SN  
 Material Thickness: 0.35 mm  
 Cross Section [mm<sup>2</sup>]: 0.35 | 0.50 | 0.75

FRAMATOME 211CC3S1120

Strip Length: 4.50 mm  
 Cable Type: FLRY-A

**Uncontrolled  
Copy**  
For Information only!

Isolation Range  $\Phi$ [mm]: 1.20-1.90  
 Seal :

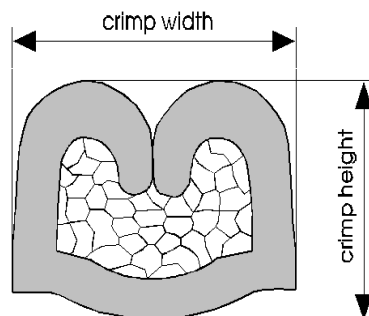
Cable type	Arrangement	Struct. nxd [mm]	Insul. diam [mm]	Tear-out force [N]	CCH [mm]	CCH tol. [ $\pm$ mm]	CCW [mm]	CCW tol. [ $\pm$ mm]	ICH [mm]	ICH tol. [ $\pm$ mm]	ICW [mm]	ICW tol. [ $\pm$ mm]
FLRY-A 0.35		7x0.26	1.30	50	1.25	+ 0.03 - 0.03	1.95	+ 0.05 - 0.05	2.10	+ 0.10 - 0.10	2.65	+ 0.10 - 0.10
FLRY-A 0.50		19x0.19	1.50	80	1.35	+ 0.03 - 0.03	1.95	+ 0.10 - 0.10	2.20	+ 0.10 - 0.10	2.65	+ 0.10 - 0.10
FLRY-A 0.75		19x0.23	1.80	120	1.45	+ 0.03 - 0.03	1.95	+ 0.10 - 0.10	2.30	+ 0.10 - 0.10	2.65	+ 0.10 - 0.10

Core:  
 C-1.85-3.5-19  
 APN 10713547

Isolation:  
 IO-2.50-2.5-10  
 APN 10713870

Anvil:  
 AS-1.85-2.50-7.0-2.6-0.2  
 APN 10783587

Two piece anvil:  
 AC-1.85-3.75  
 APN 10805071  
 AI-2.50-3.2-0.2  
 APN 10784668





Cable:  
FLRY-A 0.35mm<sup>2</sup> = 7x0.26 mm

Crimp height:  
1.25 mm

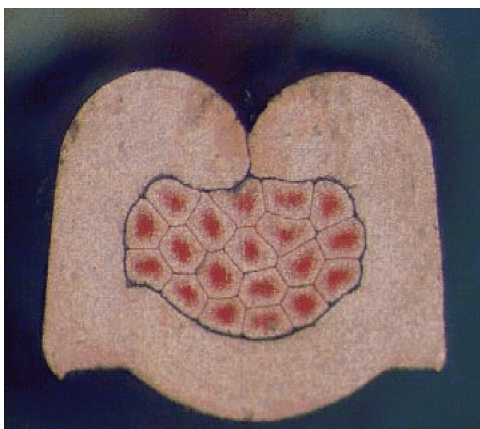
Crimp width:  
1.95 mm



Cable:  
FLRY-A 0.50mm<sup>2</sup> = 19x0.19 mm

Crimp height:  
1.35 mm

Crimp width:  
1.95 mm



Cable:  
FLRY-A 0.75mm<sup>2</sup> = 19x0.23 mm

Crimp height:  
1.45 mm

Crimp width:  
1.95 mm