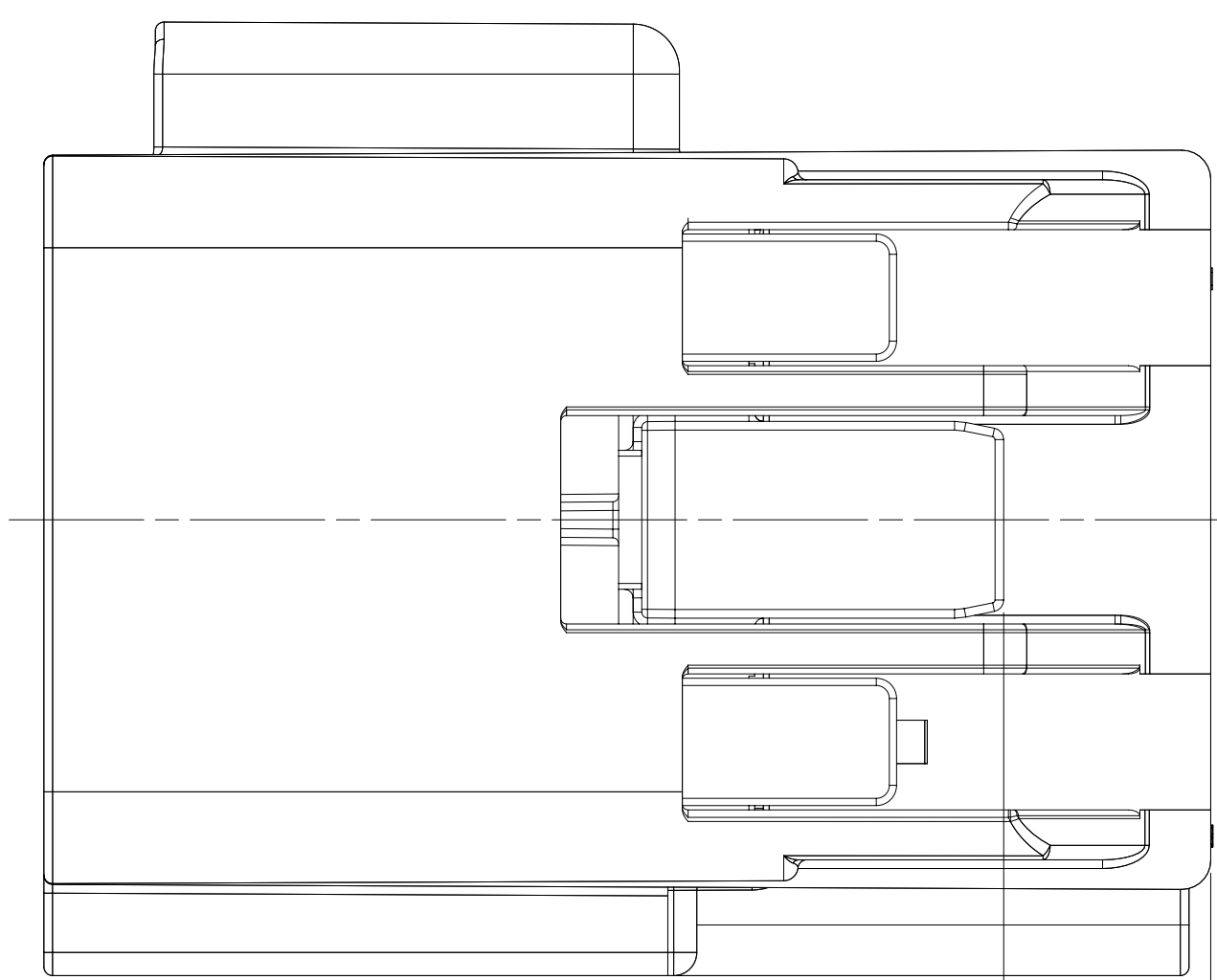


TYPE 101



2X 11  
— 2X (7.15) TYP FINAL POSITION

35450265	03	AA	104	35450270	35450273	35450274
35450263	03	AA	103	35450269	35450273	35450274
35450261	03	AA	102	35450268	35450273	35450274
35450260	03	AA	101	35450267	35450273	35450274
PART NO	REV	N/P	TYPE	CONNECTOR	LOCK PLR	MBS

SYMBOL DEFINITION

A DIMENSION WITHOUT AN INSPECTION REPORT SYMBOL  DOES NOT REQUIRE INSPECTION. IT MAY BE CONTROLLED ON THE INDIVIDUAL COMPONENT DRAWING.

TOTAL NO OF INSPECTIONS REQUIRED

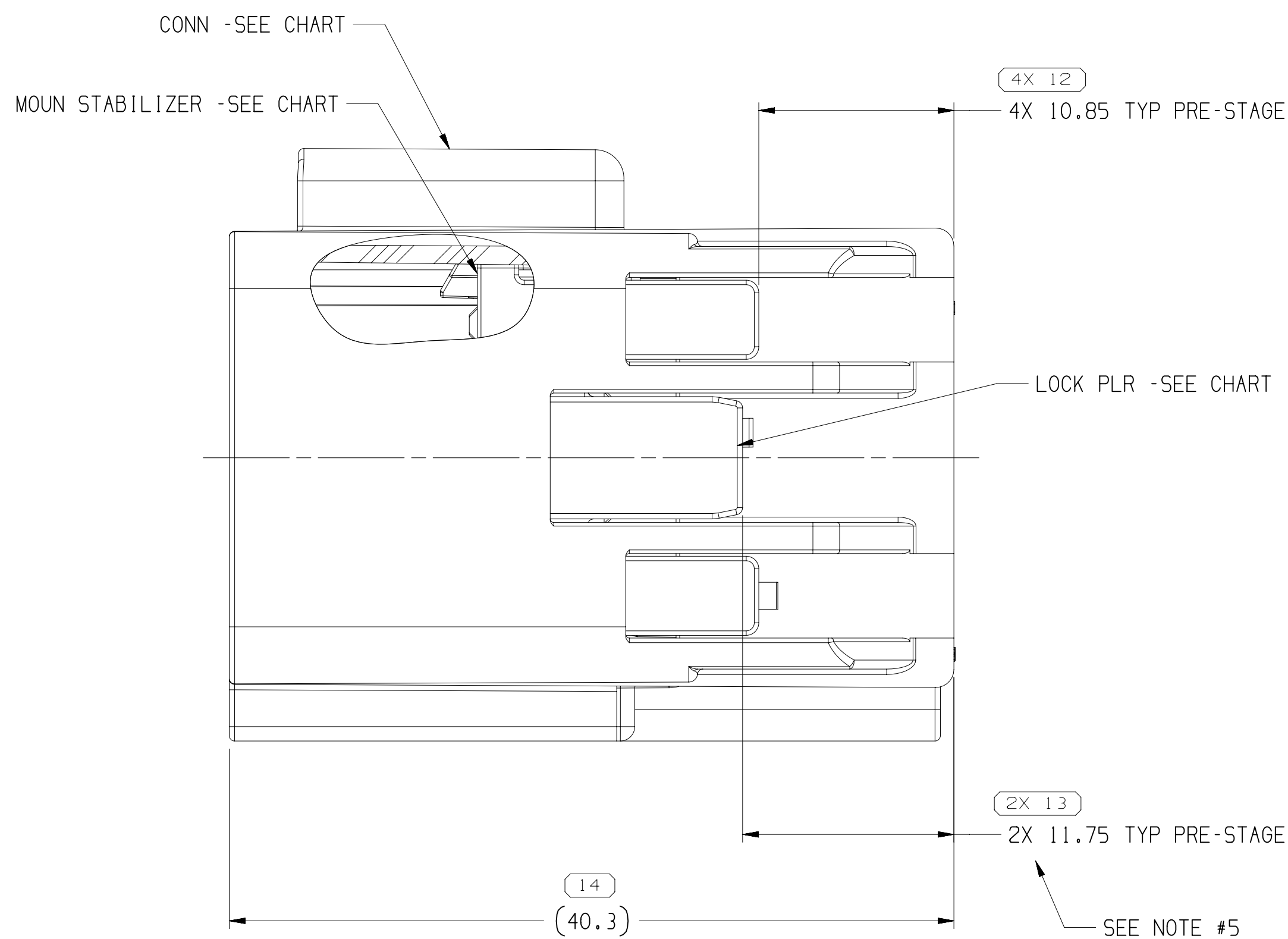
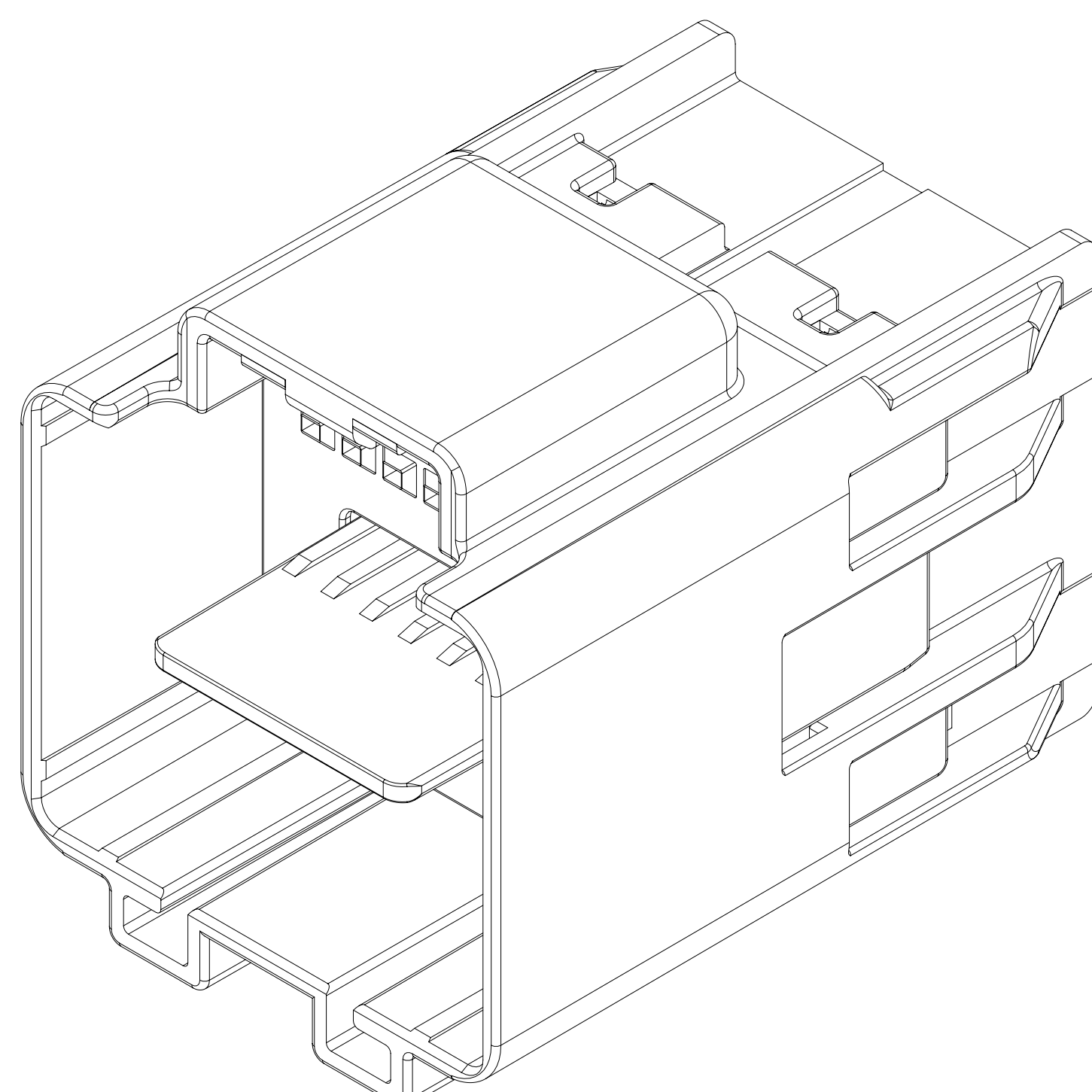
MISSING SYMBOLS

DNG STATUS				

REVISION HISTORY


AUTH	DR	APVD	APVC
------	----	------	------

DWG STATUS					ZONE	REVISION HISTORY	AUTH	DR	APV1	APV2
DATE	REV	REV	N/P	CHS						
04SE20	R	01	-	-	ALL PARTS - RELEASED PART DRAWING	551195	SM	KV	JDS	
08MR21	R	02	-	-	ALL PARTS - REVISED GRAPHICS	553705	VS	KV	JDS	
03JAU21	R	03	-	-	ALL PARTS - REVISED GRAPHICS	555205	VS	KV	JDS	
02FE22	R	04	-	-	UPDATED PART AVAILABILITY	556483	VS	KV	JDS	



## NOTES

1. UNLESS OTHERWISE SPECIFIED AND/OR INDICATED:  
  
DIMENSIONS ARE TO FACE OF VIEW SHOWN AND  
AUTOMATICALLY ROUNDED BY COMPUTER FOR INSPECTION  
(SEE MATH MODEL FOR PRECISE DIMENSIONS). FOR ALL  
OTHER DIMENSIONS NOT SHOWN BUT REQUIRED FOR TOOL  
BUILD, SEE MATH MODEL FOR PRECISE TOOL PATH DATA.
2. THIS PRODUCT IS NOT CATEGORIZED AS AN APPEARANCE ITEM, MINOR  
IMPERFECTIONS INCLUDING, BUT NOT LIMITED TO, FLOW MARKS, COLOR  
BLEMISHES, GATE VESTIGE, AND SOFT FLASH THAT DO NOT AFFECT THE  
FIT, FORM, OR FUNCTION OF THE PART ARE PERMISSIBLE PER DNPW-4.7-CS-01
3. FOR APPLICATION DATA SEE THE INDIVIDUAL APPLICATION DRAWINGS.
4. SEALING CODE 0 - UNSEALED
5. DELIVERY CONDITION TO WIRE ASSEMBLY PLANT, PLR PRE-STAGED POSITION  
BEFORE TERMINALS.
6. DELIVERY CONDITION TO VEHICLE ASSEMBLY PLANT, PLR FINAL POSITION  
AFTER TERMINALS.
7. BEFORE TERMINAL ASSEMBLY, VERIFY THE PLR IS IN THE PRE-STAGE POSITION  
ON THE CONNECTOR. IF NOT, RETURN THE PLR TO PRE-STAGE POSITION.

A LINE DRAWN THROUGH A PART NUMBER INDICATES THAT PHYSICAL PARTS ARE NOT AVAILABLE FOR ORDERING.	
PART NUMBERS THAT DO NOT HAVE A LINE PRESENT INDICATE THAT PHYSICAL PARTS ARE AVAILABLE FOR ORDERING.	
CONTACT NPTV SALES TO ASSURE AVAILABILITY OF PARTS.	
DWG TYPE	PART DRAWING
STYLE	
VOLUME (CM <sup>3</sup> )	DISTR CODE
	
UNLESS OTHERWISE SPECIFIED	
THIS DOCUMENT IS IN ACCORDANCE WITH ASME Y14.5M-1994 AND THE FIRST ANGLE OF PROJECTION SYSTEM. TOLERANCING: DIMENSIONS AND FITS - SEPARATE PATTERNS OF FEATURES MAY BE GAUGED SEPARATELY REGARDLESS OF DATUM REFERENCES.	
ALL DIMENSIONS ARE IN MILLIMETERS	
REFERENCE	

# • APTIV •

CONNECTION SYSTEMS

Germany, India

COPYRIGHT 2020 APTIV. ALL RIGHTS RESERVED.

THIS DRAWING IS THE PROPERTY OF APTIV AND CONTAINS APTIV CONFIDENTIAL INFORMATION. THE REPRODUCTION, DISTRIBUTION AND UTILIZATION OF THIS DOCUMENT OR ITS RELATED CAD DATA DATA, AS WELL AS COMMUNICATION OF ANY CONTENT TO OTHERS, WITHOUT EXPRESS AUTHORIZATION, IS PROHIBITED.

DR	DATE
APV01	M SAKTHIVELU 04SE20
APV02	V. KANDASAMY 04SE20
APV03	JOHN SCHNEIDER 04SE20
APV04	
APV05	

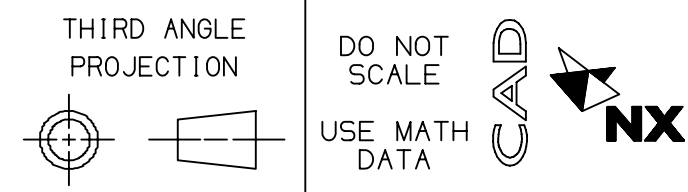
SUBSTANCES OF CONCERN AND RECYCLED

CONTENT PER APTIV (DWA001)

MATERIAL: **SEE CHART**

DRAWING NAME

		N/A		PROCESS SENSITIVE DIMENSION					
		DIMENSIONS ENCLOSED IN ( ) INDICATE REFERENCE DIMENSIONS AND NO TOLERANCE LIMITS ARE ESTABLISHED							
DIMENSIONAL FROM TO	RANGE	MMI	CHART E						
> 0	> 20	> 30	> 70	> 100	> 150	> 200	> 250	> 300	
	30	30	70	100	150	200	250	300	
TOLERANCE LESS OTHERS SPECIFIED									
	±0.15	±0.2	±0.3	±0.5	±0.5	±0.6	±0.8	±1	±1.2
ENGLISH AIR TOLERANCE 42"									



User: jimgkv  
Port: 3450266-CUS01-501/04 Date: 14-Feb-22 Time: 0:20:43