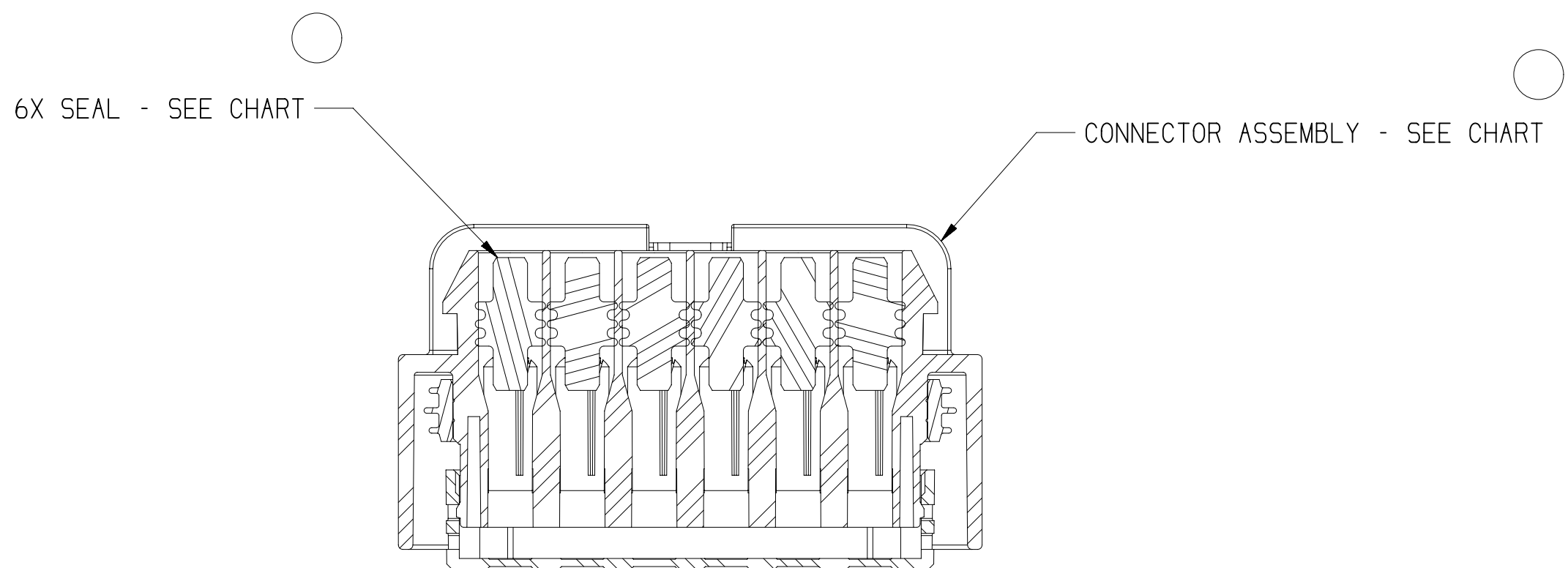
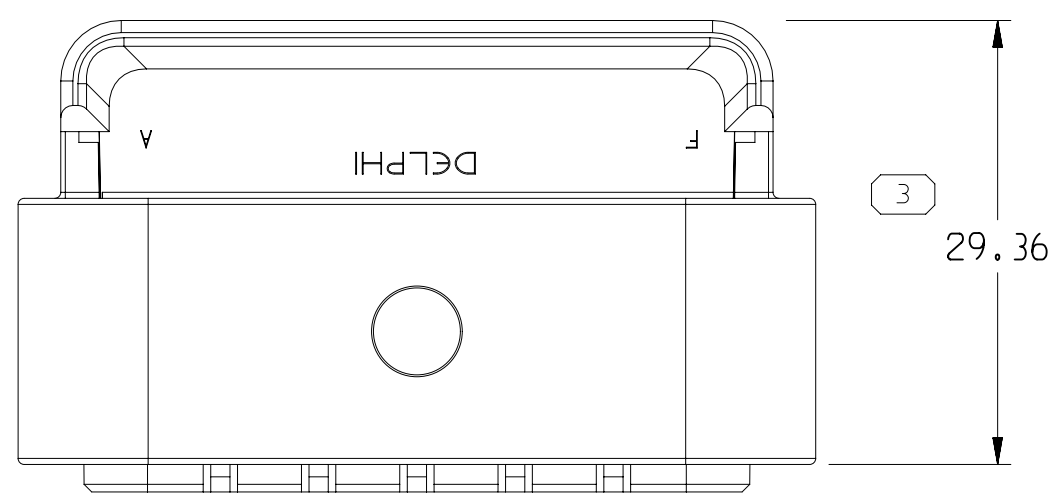
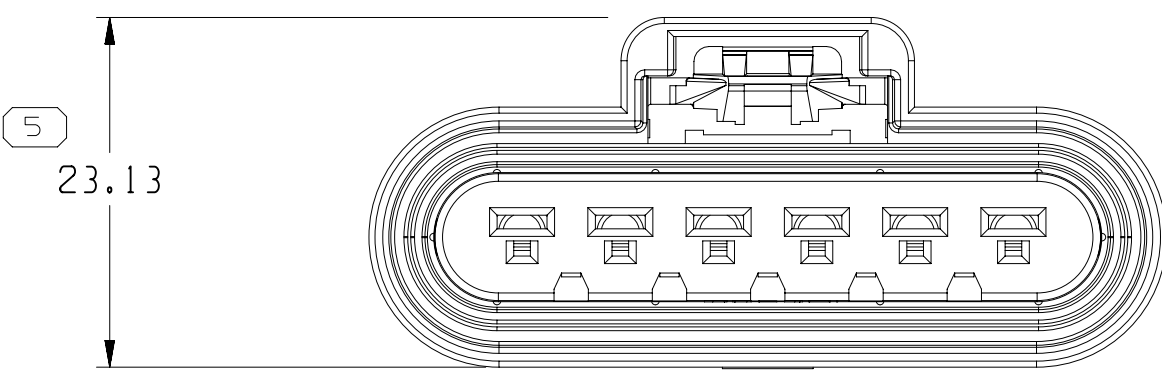
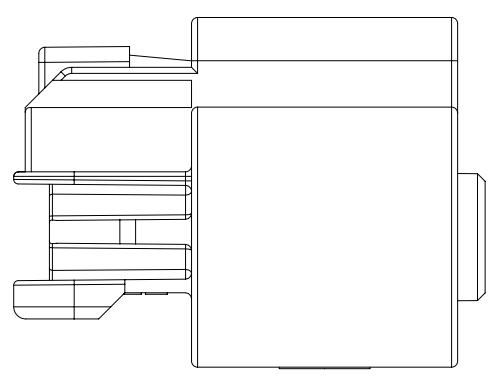
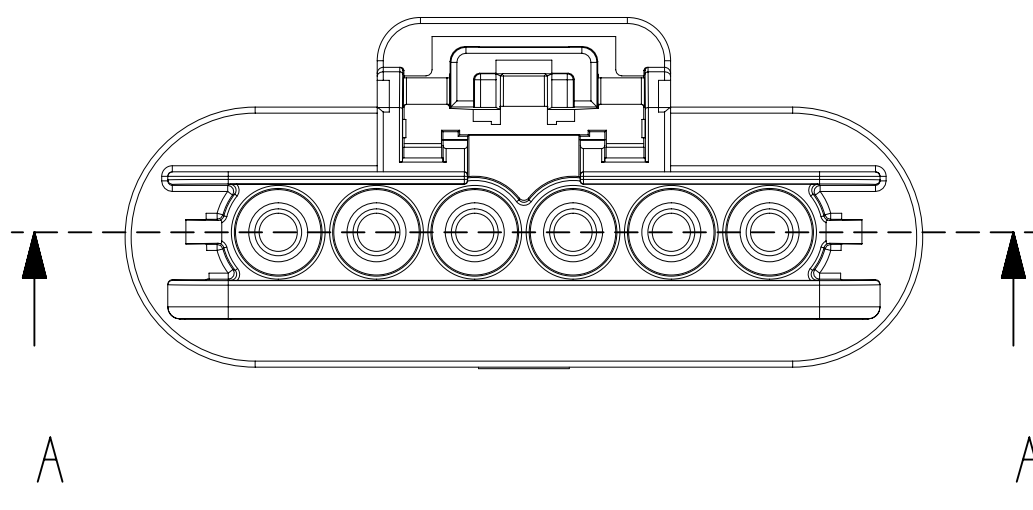
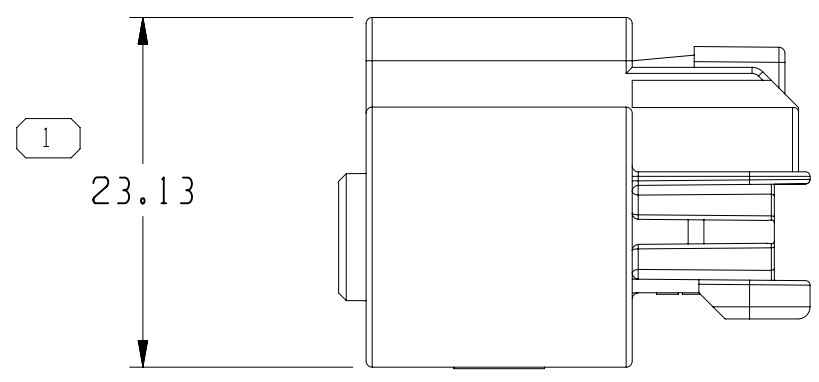
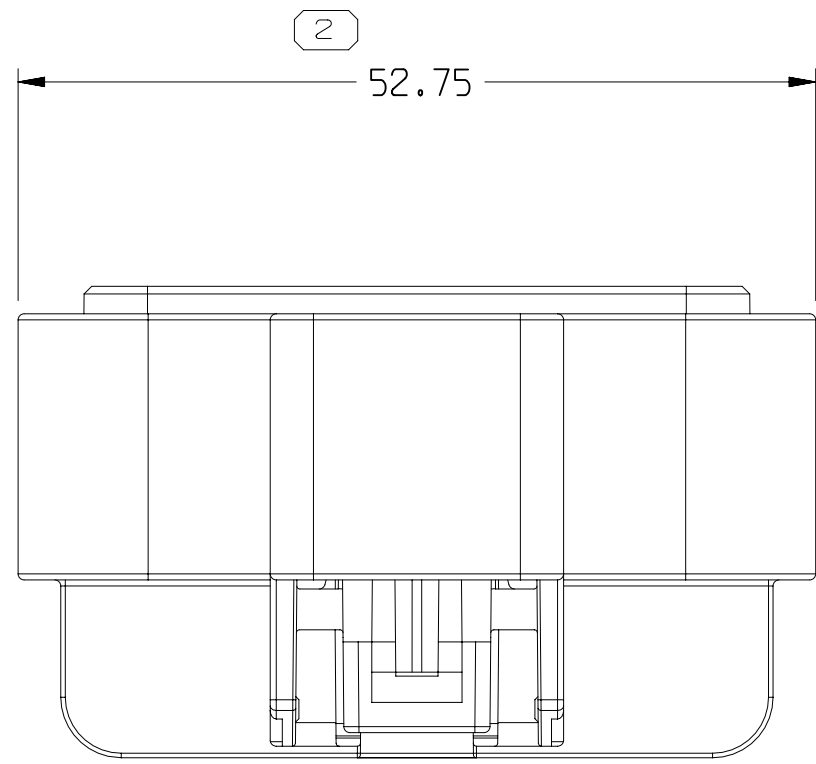
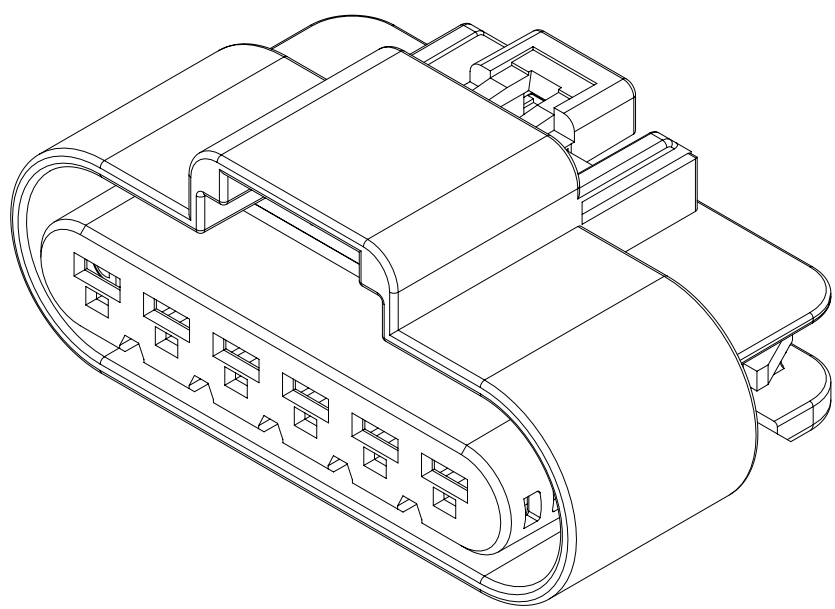


SYMBOL DEFINITION		
A DIMENSION WITHOUT AN INSPECTION REPORT SYMBOL □ DOES NOT REQUIRE INSPECTION. IT MAY BE CONTROLLED ON THE INDIVIDUAL COMPONENT DRAWING.	TOTAL NO OF INSPECTIONS REQUIRED	4
	LAST NO. USED	5

DWG STATUS				ZONE		REVISION HISTORY			AUTH	DR	APVD	APVD
DATE	STG	REV	N/P	CHG								
18DE08	R	01	-	-			RELEASED		305743	EAF	EAF	TAM
29SE09	R	02	-	-			29.36 WAS 31, REMOVED DIM 31 AND REVISED NOTES		803494	PPM/RAG	TAM	M
05MY21	R	02	AA	-			REMOVED LEADER NOTES (2 PLCS) AND REVISED LEADER NOTES (2 PLCS)		820018	FST	FST	EM



SECTION A - A

13746470	13521467	15305170
PART NO	CONN ASM	SEAL (6X)

- NOTES
- UNLESS OTHERWISE SPECIFIED AND/OR INDICATED:
DIMENSIONS ARE TO FACE OF VIEW SHOWN AND AUTOMATICALLY ROUNDED BY COMPUTER FOR INSPECTION (SEE MATH MODEL FOR PRECISE DIMENSIONS). FOR ALL OTHER DIMENSIONS NOT SHOWN BUT REQUIRED FOR TOOL BUILD, SEE MATH MODEL FOR PRECISE TOOL PATH DATA.
 - MATERIAL RECYCLING CODE PER ISO 11469. (1.15)X(0.05) CHARACTERS AS SHOWN TO BE LOCATED ON ANY EXTERIOR SURFACE.
 - THIS PRODUCT IS NOT CATEGORIZED AS AN APPEARANCE ITEM, MINOR IMPERFECTIONS INCLUDING, BUT NOT LIMITED TO, FLOW MARKS, COLOR BLEMISHES, GATE VESTIGE, AND SOFT FLASH THAT DO NOT AFFECT THE FIT, FORM, OR FUNCTION OF THE PART ARE PERMISSIBLE PER EANP-4-3-CS-01-EN.
 - CORPORATE BRAND TO BE APPLIED TO PRODUCT DESIGN PER THE LATEST REVISION OF ESD 51085201.
 - FOR APPLICATION DATA SEE THE APPLICATION DRAWING.
 - FULLY ENGAGE PLR 15326637 TO CONNECTOR BODY 13521466.

PROCESS SENSITIVE DIMENSION			
DIMENSIONS ENCLOSED IN () INDICATE REFERENCE DIMENSIONS AND NO TOLERANCE LIMITS ARE ESTABLISHED			
DIMENSIONAL RANGE (MM)	CHART		
FROM	0	> 20	> 30
TO	20	30	70
TOLERANCE UNLESS OTHERWISE SPECIFIED	±0.15	±0.2	±0.3
ANGULAR TOLERANCE	±2°	±0.4	±0.5

A - LINE DRAWN THROUGH A PART NUMBER INDICATES THAT PHYSICAL PARTS ARE NOT AVAILABLE FOR ORDERING.	
PART NUMBERS THAT DO NOT HAVE A LINE PRESENT INDICATE THAT PHYSICAL PARTS ARE AVAILABLE FOR ORDERING.	
CONTACT APTIV SALES TO ASSURE AVAILABILITY OF PARTS.	
DWG TYPE	
PART DRAWING	
STYLE	VOLVO 3P
VOLUME (CM)	DISTR CODE
UNLESS OTHERWISE SPECIFIED	
THIS DOCUMENT IS IN ACCORDANCE WITH ASME Y14.5M-1994 AS MODIFIED BY THE GM GLOBAL DIMENSIONS AND TOLERANCING ADDENDUM-2001. SEPARATE PATTERNING OF FEATURES MAY BE ORDERED SEPARATELY REGARDLESS OF DATUM REFERENCES.	
ALL DIMENSIONS ARE IN MILLIMETERS	
REFERENCE	
THIRD ANGLE PROJECTION	DO NOT SCALE
USE MATH DATA	NX

• APTIV •						
CONNECTION SYSTEMS						
WARREN, OH						
COPYRIGHT 2008 APTIV, ALL RIGHTS RESERVED.						
THIS DRAWING IS THE PROPERTY OF APTIV AND CONTAINS APTIV CONFIDENTIAL INFORMATION. THE REPRODUCTION, DISTRIBUTION AND UTILIZATION OF THIS DOCUMENT OR ITS RELATED CAD DATA, AS WELL AS COMMUNICATION OF ANY CONTENT TO OTHERS, WITHOUT EXPRESS AUTHORIZATION, IS PROHIBITED.						
DR	DATE					
APVD1 E. AVILA	18DE08					
APVD2 E. AVILA	18DE08					
APVD3 T. MEINBERG	18DE08					
APVD4						
APVD5						
SUBSTANCES OF CONCERN AND RECYCLED CONTENT PER APTIV 10949001						
MATERIAL						
N/A						
DRAWING NAME						
ASM CONN 0 F GT 280 SLD BASE 6						
DRAWING NUMBER						
13746470						
SIZE	SCALE	FRAME NO	SHEET NO	STG	REV	N/P
A0	2:1	1 OF 1	1 OF 1	R	02	AA